

CAC of Fayette County

EARLY LEARNING CENTER



Annual Report 2013

Mission Statement

Our mission is to enhance the quality of life by providing a comprehensive and dynamic program for children and families; to empower and encourage their movement towards self-sufficiency and independence; and to incorporate Head Start Core Values in all our lives and in the lives of those we touch.

Table of Contents

4. County Report
5. Services Provided
6. Introduction—Fayette Early Learning Center
7. Early Learning Program Staff
8. Professional Development
9. Family Services
10. Introduction—Early Head Start
11. Birth to 5 Enrollment
12. Numbers Served—Early Head Start
13. Early Head Start Parent Involvement Activities
14. Early Head Start Education Outcomes
15. Early Head Start Assessment Results
16. Head Start—Numbers Served
17. Head Start—Family Information
18. Step-up to Quality
19. Head Start—Child Outcomes
20. Washington City Public Preschool

Table of Contents Cont.

21. Kindergarten Preparation
22. Additional Funding—Washington City Public Preschool
23. Funding/Budgetary Information
24. Budget Expenditures
25. Parent Involvement
26. Family Engagement
27. Head Start—Parent Involvement Activities
28. Head Start—Community Involvement
29. Health & Nutrition Services
30. Health & Nutrition Services—*By the Numbers*
31. Health & Nutrition Services—Cont.
32. New Safety Measures Implemented
33. Health & Nutrition Outcomes
34. Transportation Services
35. Transportation Costs
36. Program Operations
- 37.

FAYETTE COUNTY, OHIO

Fayette County is a county located in the state of Ohio. According to the 2010 census, it has a population of 29,030, which is an increase of 2.1% from 2000. Its county seat is Washington Court House.

In 2010, the median household income of Fayette County residents was \$39,599. 17.4% of the residents live in poverty. The ethnicities represented include: White (93.8%), followed by Black (2.0%) and Hispanic (1.8%).

The county residents between the age of 0-4 is 2,058 which is a growth of 7.97% since 2000.

Head Start centers are located in Washington Court House and Jeffersonville. These centers provide classroom experiences for children from the following cities: Bloomingburg, Jeffersonville, Washington Court House, Milledgeville, New Holland, Greenfield (partially in Highland and Ross Counties), and Octa. Early Head Start services are provided through the Home-Base



Services Provided



Nutritional Services



Educational Services



Health Referral Services

Prenatal & Home-Based Services



Disability Services



Mental Health Services with both on/off site consultation



Family Education Services

Fayette County Early Learning Center

Fayette County Early Learning Center is a comprehensive child development program offering services to pregnant mothers and children birth to five years old. Fayette County Head Start is federally funded and serves all of Fayette County. Fayette County Head Start serves 148 Head Start children, 75 Early Head Start children and 30 Public Preschool children contracted through Washington City School District.



1400 US St. Rte. 22 N.W.
Washington Court House, OH

Helping
families today
for a better
tomorrow!



41 Colonial Drive
Jeffersonville, OH

Early Head Start—Operates year around in the family's home with socializations 2-3 times per month at the Head Start center

Head Start/PPS—Operates two half day sessions Monday thru Thursday. Morning classes are 8:15 AM to 11:45 AM and afternoon classes are 11:45 AM to 3:15 PM. We also offer a full-day classroom which operates from 8:15-3:15pm Monday -Thursday.

Head Start provides age and developmentally appropriate activities with a strong emphasis on literacy and numeracy. We currently use the Creative Curriculum and the Early Learning Content Standards, which aligns with the local Kindergarten curriculum. Teachers track child outcomes and plan activities accordingly.

Health and nutrition are key components to our Head Start program. All children receive height, weight, vision, hearing, nutrition, speech, developmental and social emotional screenings yearly.

Our program serves not only the children, but the entire family. Our social service area and in-depth family partnerships include; assessments, goal setting, referrals, and follow-up.



Fayette County Early Learning Center Program Staff

63 People: 43 Child Development and Health Staff, 4 Family Services Support Staff, 10 Transportation Staff and 6 Program Design/Management Staff. Of the 63 employees, 31 were current or former Head Start parents. Work history verification, reference checks, driving record checks, drug and alcohol tests and criminal records checks are completed on all Fayette County Early Learning Center staff.

100% of Teachers have Early Childhood Education or Related Degrees ~ 100% of Teacher Assistants have an Associates Degree or are in College.. ~ 100% of teaching staff are certified in Infant, Child and Adult CPR and First Aid ~ 100% of teaching staff have Professional Development Plans.

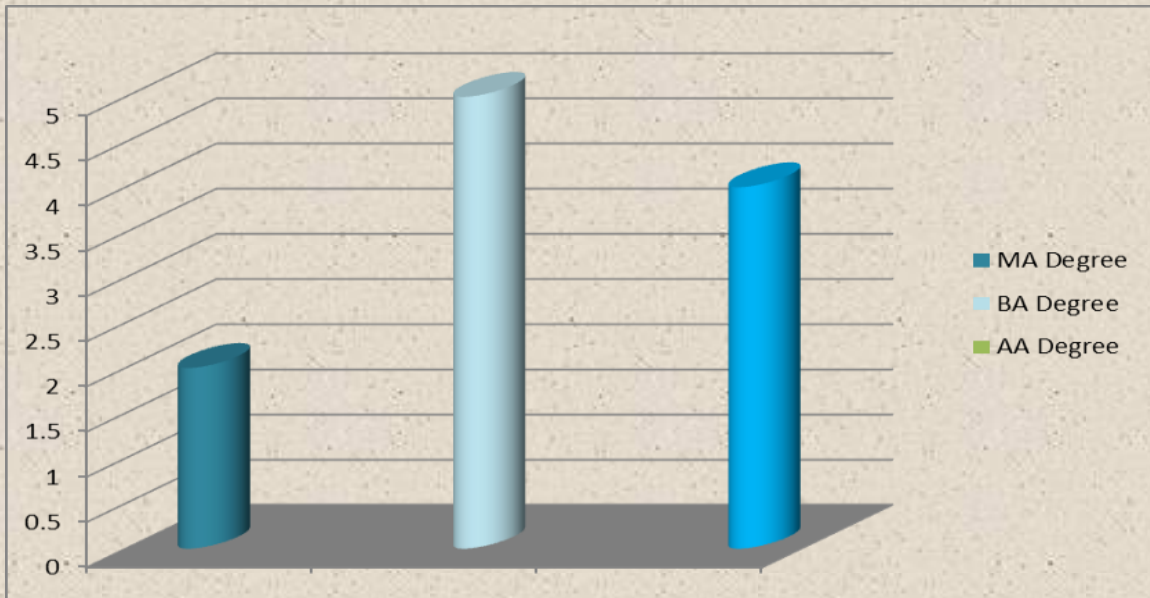


~Building Tomorrow Today ~

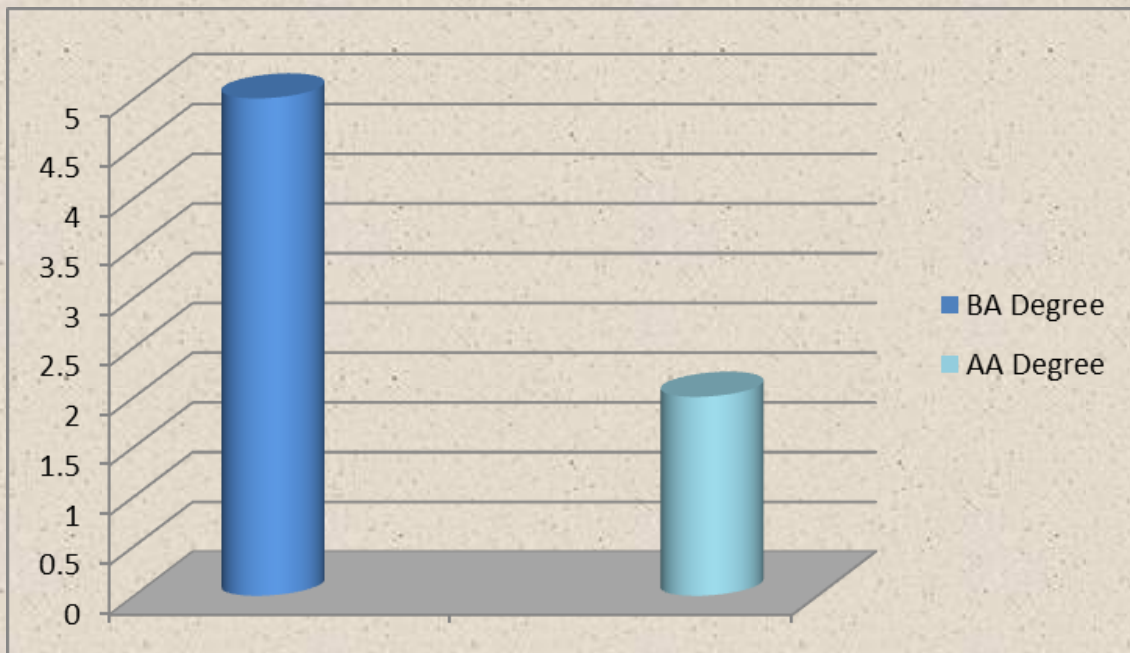


Professional Development

Head Start Teachers:
5 Teachers, 5 Assistant Teachers



Early Head Start Home Visitors:
7 Home Visitors Total



Family Services

Service Received	Families
1. Emergency/crisis intervention -Food, clothing, shelter emergency needs.	4
2. Housing assistance such as subsidies, utilities, repairs, etc.	7
3. Mental Health Services	1
4. English as a Second Language (ESL) training	0
5. Adult Education such as GED programs and college	2
6. Job Training	1
7. Health Education	5
8. Parenting Education'	7
9. Child Support Assistance	2
10. Relationship/marriage education	0





Introduction—Early Head Start



Program Overview—Early Head Start

Early Head Start focuses on health, cognitive, physical, social and emotional growth of infants and toddlers. We promote healthy outcomes for pregnant women and support positive family relationships.



The Early Head Start home-based program delivers services that capitalize on the home as the young child's primary learning environment. Research has shown that offering supportive services early in life provides the optimal potential for healthy growth and development.

Our Early Head Start program provides services to pregnant women and their families through the child's first three years of life.

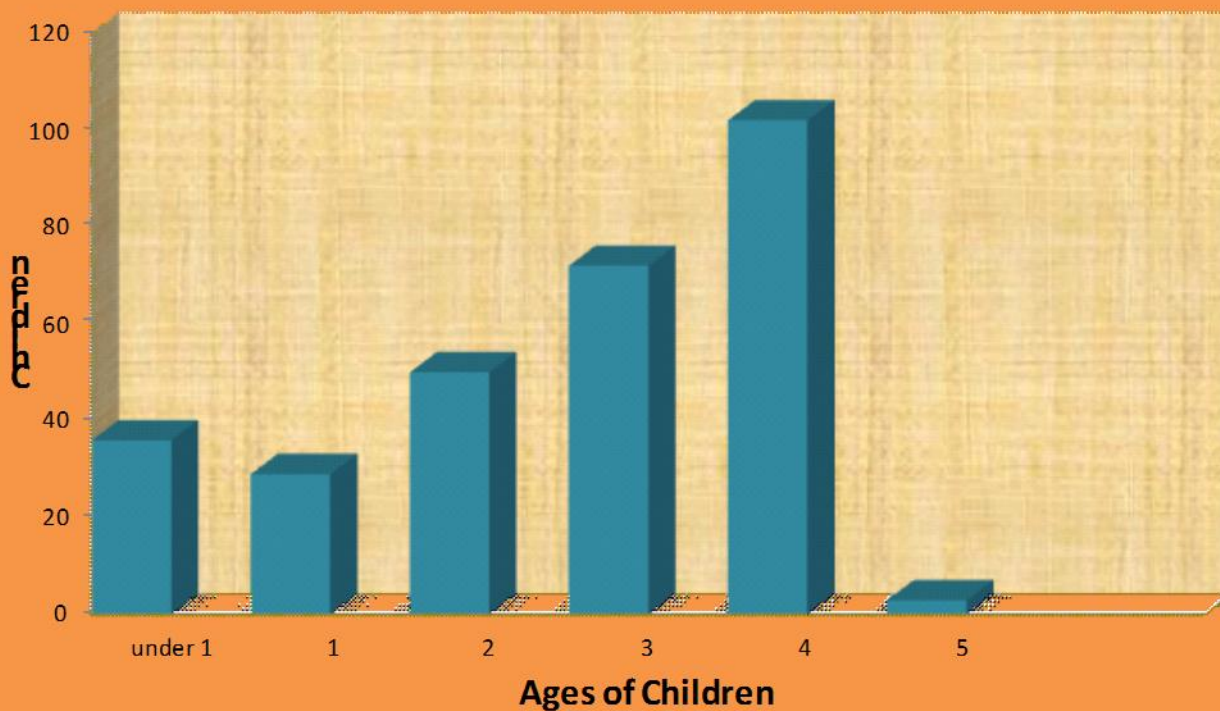
Some of our expected outcomes include:

- ♦ To support family members as primary caregivers and educators of their children as they strive toward self-sufficiency.
- ♦ Support the attachment between parent and child; *parents are their child's first teacher.*
- ♦ To promote safe, healthy and developmentally enriched care giving to infants and toddlers through the home and group experiences.
- ♦ To encourage parent involvement in all aspects of planning, implementing, and evaluating the EHS program.

Fayette Early Learning Center

Birth to 5 Enrollment

Ages of Children Served at Enrollment



Early Head Start 2012/13

Number of Funded Slots	75
Number of Children Served During School Year	120
Number of Pregnant Women	7
Number of Families Served	88
A. Two Parent Families	45
B. Single Parent Families	43
Number of Families Receiving Public Assistance, TANIF, SSI	13
Number of Homeless Families Served	4
Number of Children with Disabilities Who Received Special Services From ISD or ECI	9
Number of Children In Foster Care at Any Point Throughout The Year	0
Number of Children Diagnosed With A Chronic Condition needing Medical Treatment	11



~Building Tomorrow Today~

Early Head Start Parent Involvement Activities

From the time of enrollment parents are encouraged and offered many opportunities to be involved with the program. As their child's first teacher, parents have an important role in their child's educational experience.

HOME VISITS



Parents and children both participate in the activities provided by the Home Visitor.

SOCIALIZATIONS



Parents and children come to the center to interact and learn new activities.

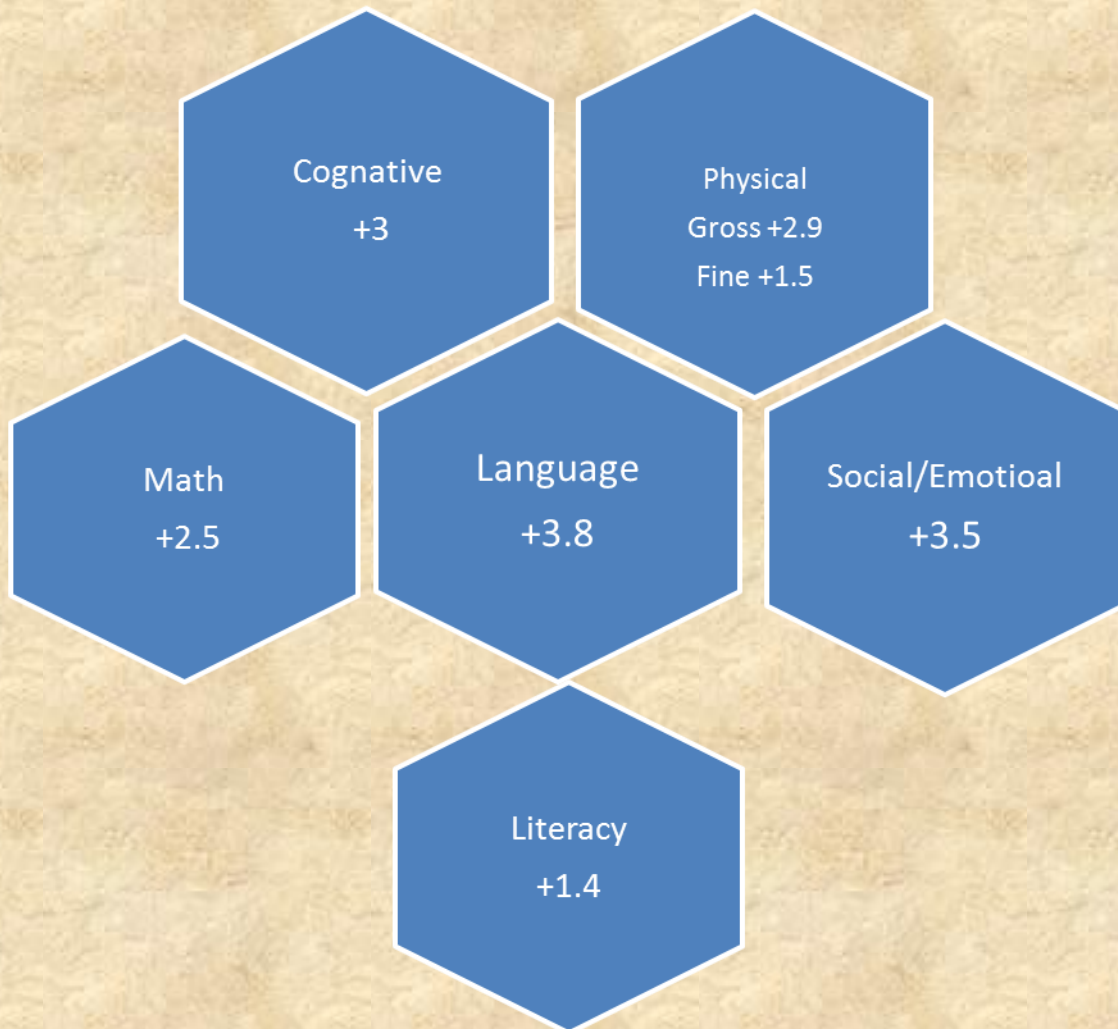
TRAININGS



Various trainings are provided to address the needs of the families.

Early Head Start 2012/13 Education Outcomes

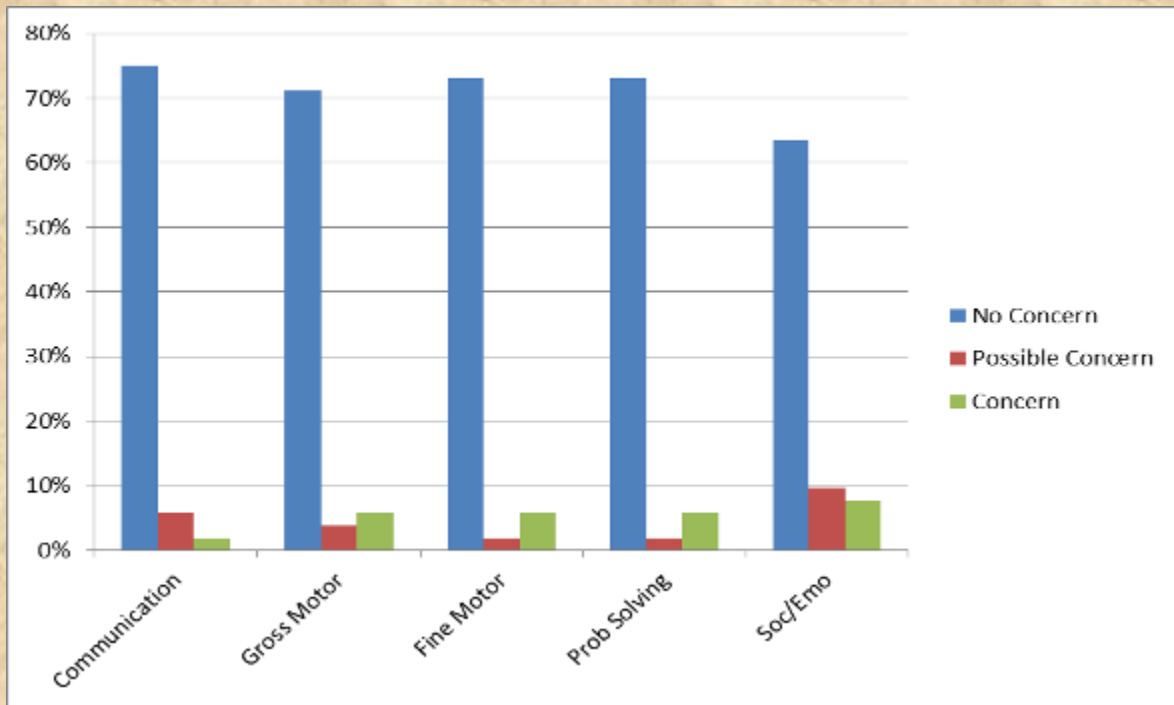
Early Head Start has shown an increase in all educational domains.



Our goal is for children to be physically healthy, socially competent, and academically prepared as they transition into Head Start.

EHS ASQ-3 Assessment Results 2012-13

Currently, the Early Head Start program utilizes the screening tool, Ages & Stages Questionnaire to assist with identifying strengths, delays, and possible concerns in core developmental areas of children, ages one month to 3 years. This chart shows the aggregated results for the program year 2012/13.





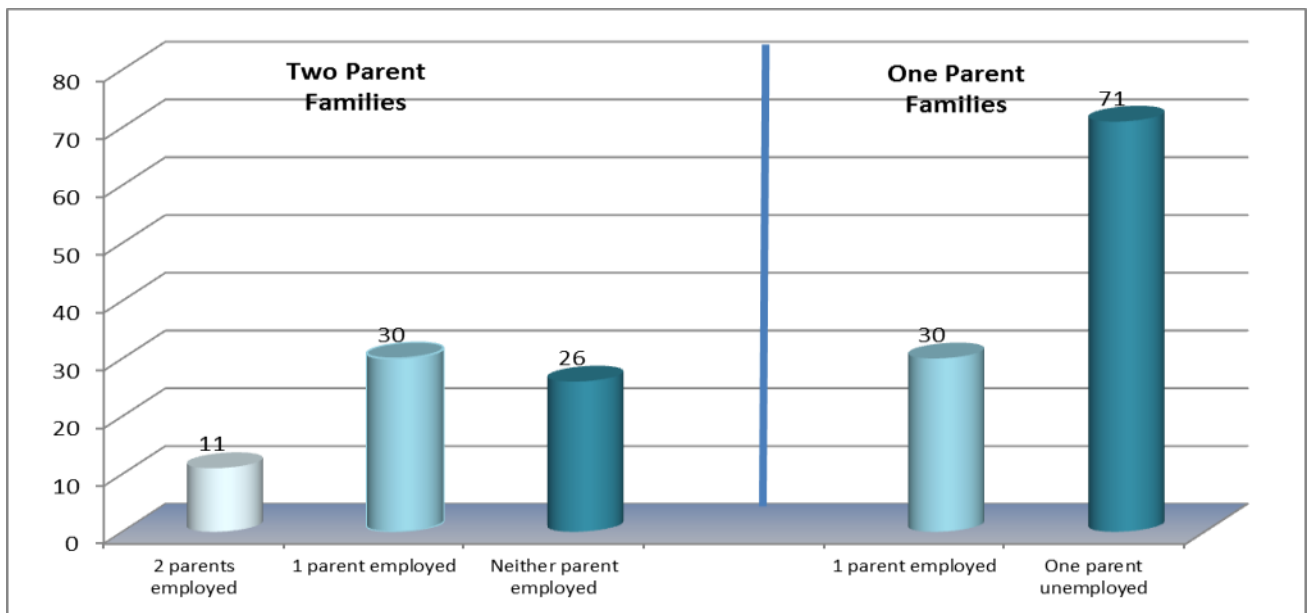
Numbers Served - Head Start

For the school year 2012/2013, Fayette County Head Start provided services for 171 children in 158 families which, accounts for 9% of the county's children under five years of age. The program is funded for 148 children and maintained full enrollment throughout the program year with an average monthly enrollment of 148 or 100% of the funded enrollment. Of the children served, (100%) were income eligible (including children below 100% of poverty, on public assistance, foster children, and homeless).

Children and Families Served by Head Start

Children by Age	Number Enrolled
2 year olds—turned 3 after Aug. 1st	7
3 year olds	70
4 year olds	102
5 year olds	3
Total	182

Type of Eligibility	Number Enrolled
Percentage of children with IFSP or IEP	22/12%
Percentage of Eligible Children Served	7% Head Start 3% Early Head Start
Income below 100% of Federal poverty	176
Receipt of public assistance (e.g., TANF)	30
Status of foster child	1
Status of homeless	15
Over Income	0
Total	182



- 17% of two parent households had both parents employed
- 39% of two parent households had one parent employed
- 44% of two parent households had two parents unemployed
- 30% of one parent households had one parent employed
- 70% of one parent households had one parent unemployed

STEP UP TO QUALITY

WASHINGTON COURT HOUSE CENTER— 3 star rated center - AWARD \$6,000

Classroom Supports	\$6,000
TOTAL	\$6,000

JEFFERSONVILLE CENTER— 3 star rated center—AWARD \$4,000

Classroom Supports	\$4,000
TOTAL	\$4,000



Step Up To Quality is a voluntary rating system created by the Ohio Department of Jobs and Family Services Bureau of Child Care and Development. The intent is to improve the quality of early child care and education. Participating programs apply for a 1, 2, or 3 star rating. There are benchmarks at each star level. Programs apply for a 1, 2, or 3 star rating. To achieve your center’s star status, specific benchmark criteria must be met. Benchmarks include, but are not limited to; degrees held by teaching staff, child-staff ratios, and benefits available to staff. Programs with star ratings receive a Quality Achievement Award. The amount of awards is determined by program size, number of subsidized children, and number of the star rating. Twenty-five percent (25%) of the QAA must be used towards Program Improvement. The Quality Achievement Award can be used for:

1. Program Improvements

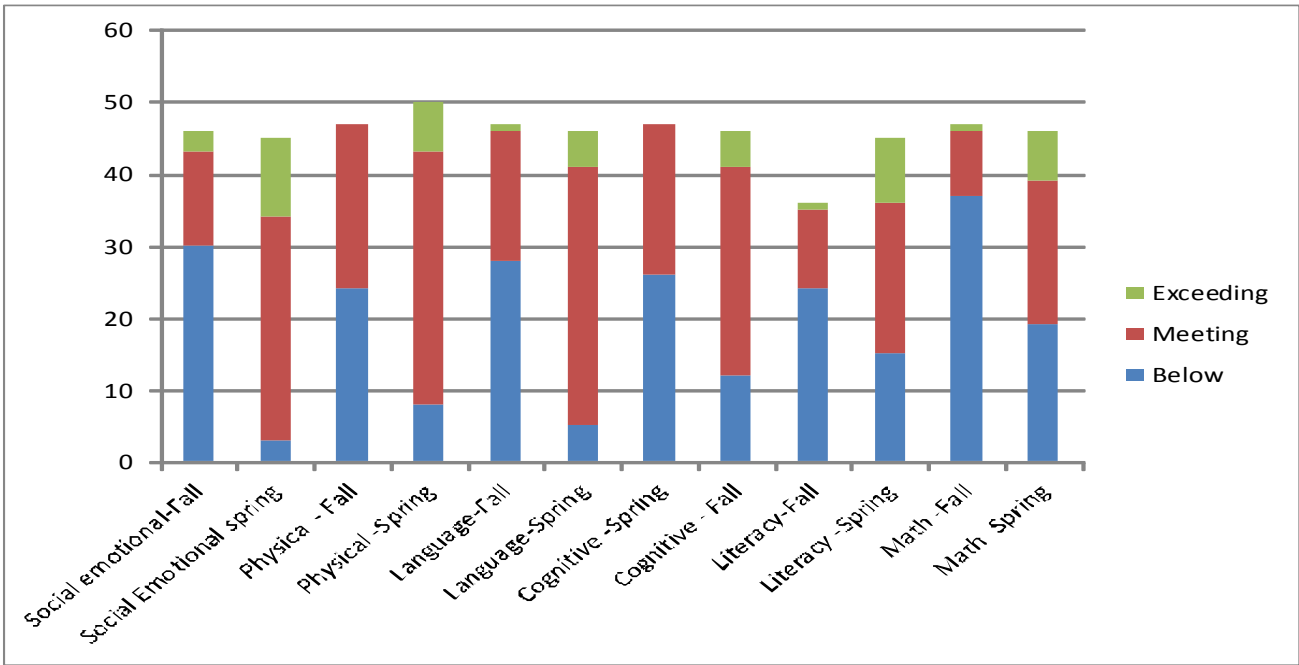
- A. Critical Repair (to improve the health and safety of the physical environment)
- B. Classroom Supports (to purchase developmentally appropriate materials and furnishings to support child development across all domains).
- C. Benchmark Supports (purchases to maintain and or improve programs quality through SUTQ benchmarks).

2. Merit

- A. Accreditation Costs
- B. Compensation (costs related to salaries, merit awards, benefits)
- C. Staff training/professional development
- D. Administrative Supports (to assist with costs of managing the program)
- E. Program Supports (to assist with the costs of programming not related to individual classrooms).

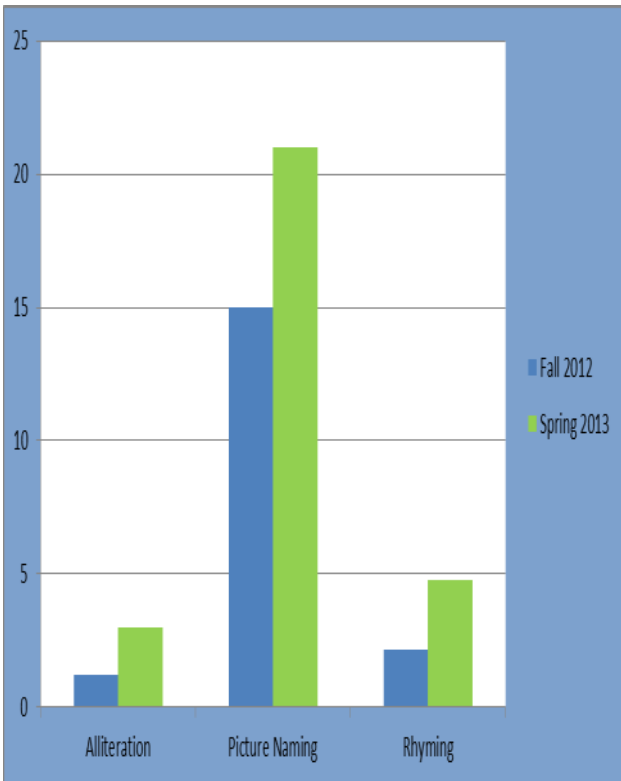
Child Outcomes

Teaching Strategies Gold Results

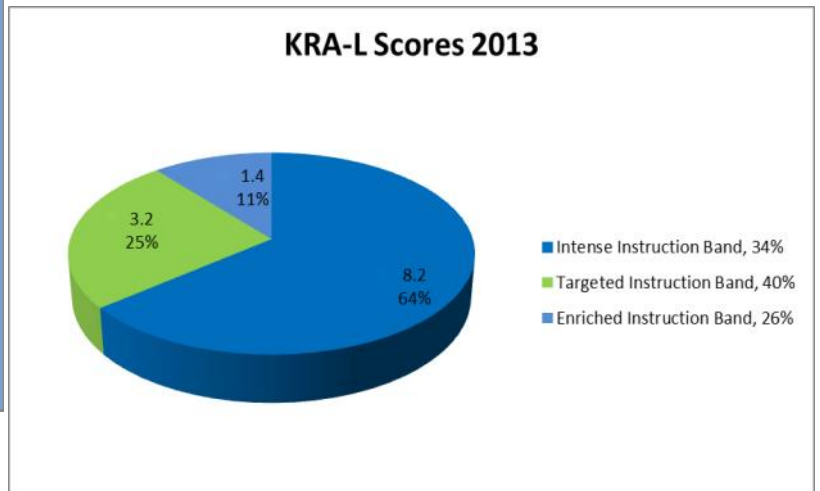


Get-it, Got-it, Go Results

KRA - L Scores, Fall 2013



Eighty-three (98) children transitioning to Kindergarten in the fall of 2013 were given the Kindergarten Readiness Assessment - Literacy (KRA-L), by the school districts in the county. Children are placed in one of three bands based on their score, Intense Instruction- score 0-13, Targeted Instruction- score 14-23, and Enriched Instruction- score 24-29. Thirty-three (33) children or (34%) were in the Intense Instruction band, thirty-nine (39) or (40%) were in the Targeted Instruction band, and twenty-six (26) or (26%) were in the Enriched Instruction band.





Washington City Public Preschool



Through a collaborative effort with the Washington Court House City School District, we provide preschool services to 30 children and families. Children must be age eligible and reside within the city limits. Income eligibility enables families to receive services at no or limited costs.

Teachers work with students to learn through play, exploration and communication. Lesson plans are submitted weekly and follow Teaching Strategies Gold and Ohio Early Learning and Development Standards.

Teachers conduct home visits and conferences with parents or legal guardians. Children receive health, nutrition, hearing, vision, physical, dental, developmental and social emotional screenings. In addition to screenings, the teacher completes the Early Childhood Outcomes Report (ECO), a summary of the ASQ, PATH, GGG and Dial-4. Scores are reported to the



Washington Court House City School District twice yearly.



Kindergarten Preparation

Throughout the school year, teachers worked with children on kindergarten readiness skills. Each child was assessed using Teaching Strategies Gold. Individual goals were established based on the child's current and emerging skills. Kinder Camp is an opportunity for parents of children transitioning to kindergarten to meet with



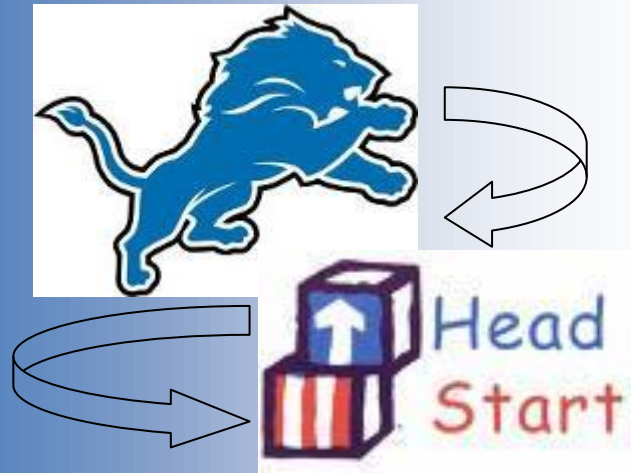
teachers and go over assessment data, meet public school teachers/administrators, and to create activities to help their children continue to learn over the summer months.



A kindergarten folder containing copies of shot records, birth certificate, custody papers, and social security card is provided to the parents. Parents are informed of upcoming registration dates and times. At the conclusion of the school year, the teachers send home ideas and suggestions for the child to work on over the summer months.

Kindergarten Field Trip

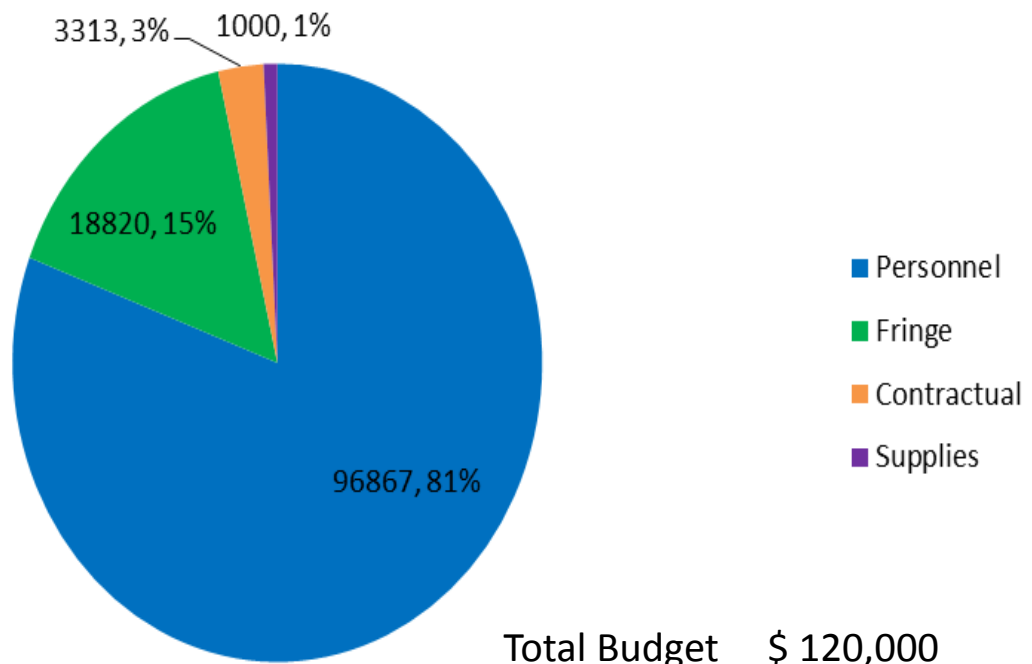




Additional Funding

Washington Court House City Schools Public Preschool Partnership

Public Preschool Budget

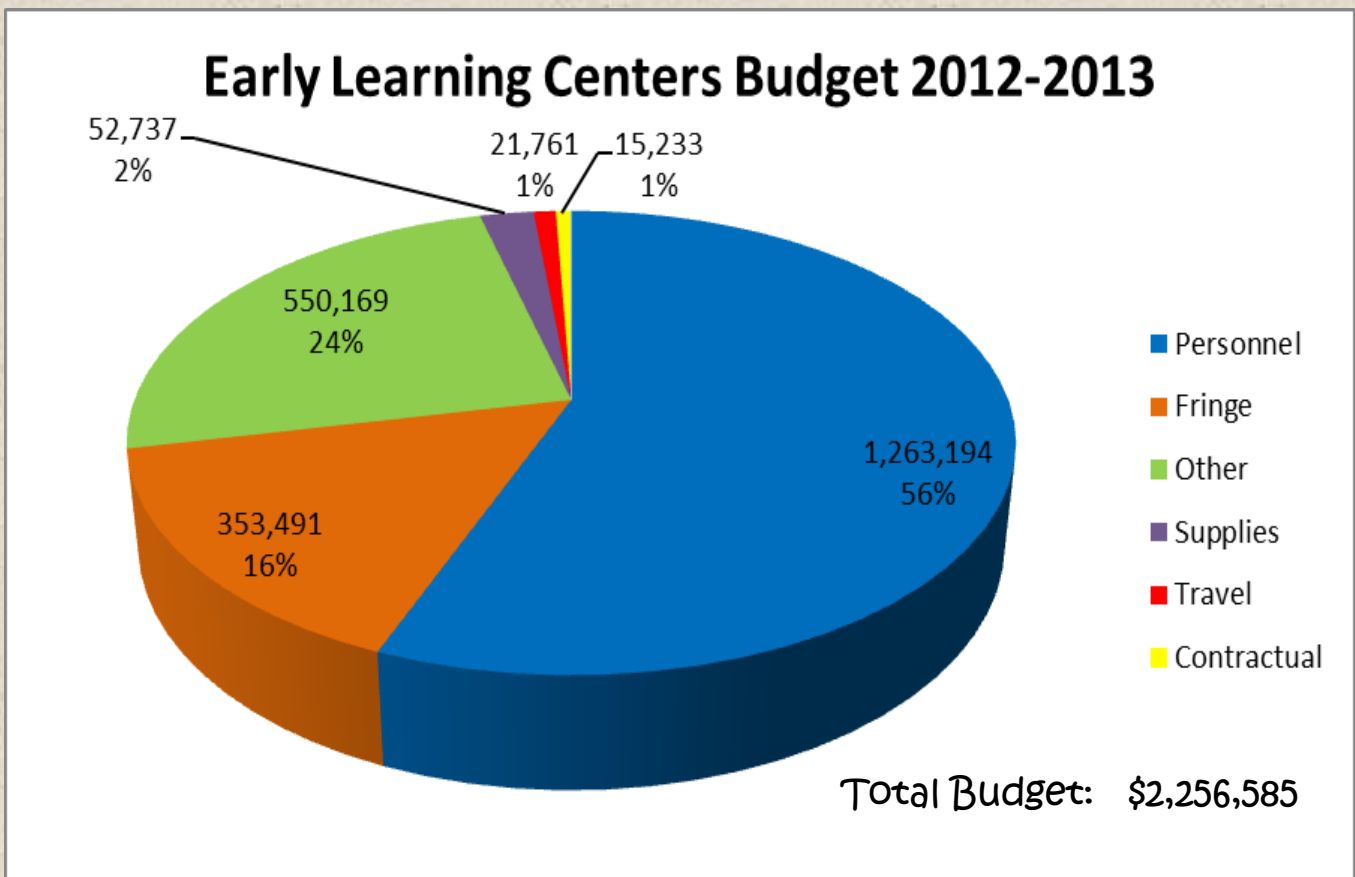


USDA 3/1/2012-2/28/2013 Total Reimbursement = \$74,220.76

Funding/Budgetary Information

Community Action Commission of Fayette County received \$1,368,725 through a grant from the Administration for Children and Families (ACF) to administrator the Head Start/Early Head Start programs for the 2012-13 program year. The required non-federal share of \$564,146 was not met. The agency received a waiver in the amount of \$290,855.

The budget is separated into eight (8) cost areas: personnel, fringe benefits, travel, equipment, supplies, contractual, facilities/construction and other. All costs are direct cost; there is no indirect cost. There is a 15% limit on the amount of the budget that can be charged as administrative cost. The following is the budget expenditures for 2012/2013.



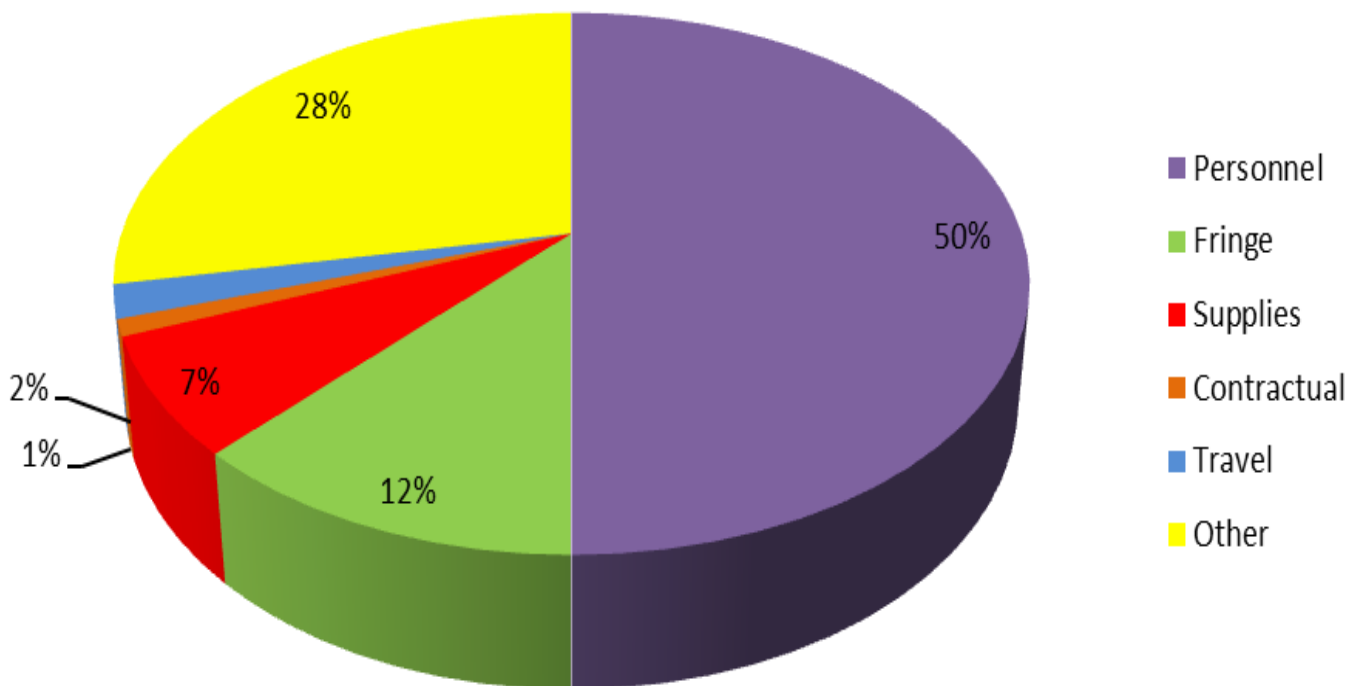
The program received 4 months additional funding 3/13/13—6/30/13 due to Designated Renewal Competition.



Budget Expenditures



Budget Expenditures 2/28/13



This budget was extended 4 months due to Designation Renewal Competition.

Parent Involvement.....

At Fayette Early Learning Center, we stand behind the principle that: *Parents are their child's first teacher* by encouraging parent involvement in the planning and education of their child.



Parent Involvement services and activities include.....

- ◇ Needs Assessment—Completed at enrollment and incorporated immediately.
- ◇ Parent Orientation—100% of families attend an orientation and have the opportunity to tour our centers.
- ◇ Screening—95% of all children attended Screening Day before school started. Screening Day included: social/emotional screening, hearing/vision, Dial-4 screening, speech screening, dental and physical screenings and bus safety.
- ◇ Parent Meetings— Parent meetings are held at each center on a monthly basis which incorporate speakers and trainers during the meetings.
- ◇ Committee Meetings— Parents are encouraged to attend planning and committee meetings throughout the school year.
- ◇ Volunteering—Parents are encouraged to volunteer in their child's classroom by helping prepare materials, ride the bus, attend trainings, parent meetings, Policy Council and Governing Board.
- ◇ Education—Parent participation in curriculum planning, parent-child activities, parent/child activity sheets and parent/teacher conferences and home visits.
- ◇ Family Services— Family Partnership Agreements are completed with each family where needs are addressed and goals are established. Those goals are followed up with families on a monthly basis.
- ◇ Health/Dental— Parents are involved in preventative health, dental and medical care and follow-up.
- ◇ Disabilities— Our agency work closely with the public school systems, Speech Pathologist and Help-Me-Grow in the identification and follow-up for children with a suspected delay.

We build leadership in our program by providing opportunities to parents and community representatives to participate in our Parent Meetings, Policy Council and Governing Board.

Governing Board



**William Dent
Michael Gibbons-Camp
Jack DeWeese
Niki Glipsie
Gayle Hansen-Browne
Nancy Stegbauer
Connie Matthews
Mikki Hunter-Smith
Gordon McCarty**

**Tammy Westcamp
Robert White
Faye Williamson
Chuck Winkle
Tavia Kettles
Cheryl Royster**

Policy Council Members

**President—Larin Taylor
Vice President—Libby Hartshorn
Secretary—Heidi Justice
Fay. Co. Health Dept.—Dal-Craig
Crawford
FCDJFS—Ashley Ward
Starting Gate— Patrisha Thiebert
PPS Parent—Bobbi Cress
HS Parent—Rebecca Baker
Bobbi Cress
EHS Parent— Tiffany Dunaway
Tiffany Self
Tracy Hawk**



Head Start Parent Involvement Activities

During the 2012-2013 program year, parents could participate in Head Start in any of the following ways.....



During Parent Meetings, officers are elected and information about our program is presented and voted on.



Teachers provide Make-it, Take-it activities for parents to use them with their children.



Parents volunteer in classrooms



Head Start Community Involvement



Local Auctioneer auctions off items donated by community members.



An artist from the school helps draw in crowd at the local fair with body painting.



School HI-Y group provides activities and childcare during parent meetings.



Kindergarten staff come from local districts to provide screenings.

Health & Nutrition Services

Our Head Start children begin their health screenings at our Child Screening Days. Through collaborative efforts with our community professionals we offer on-site physical examinations, dental exams, fluoride treatment, hemoglobin, lead, vision, speech, hearing and developmental screenings. Parents are made aware of any needed follow-up and have access to community professionals to discuss their child's needs. These screening days are extremely helpful to both parents and staff. Parents are able to obtain everything their child needs in one visit and staff are able to complete all needed developmental screenings!

Dental follow-up is the biggest concern for our Head Start children. Our program is a rural program and access to the specialized pediatric dentistry that the majority of our children need is not available within our county. Our partnership with an excellent pediatric dentist has been quite an asset to our children. It is a 45 mile one way trip to her office. We offer transportation assistance to all families which enables them to keep their appointments and obtain their child's dental care.

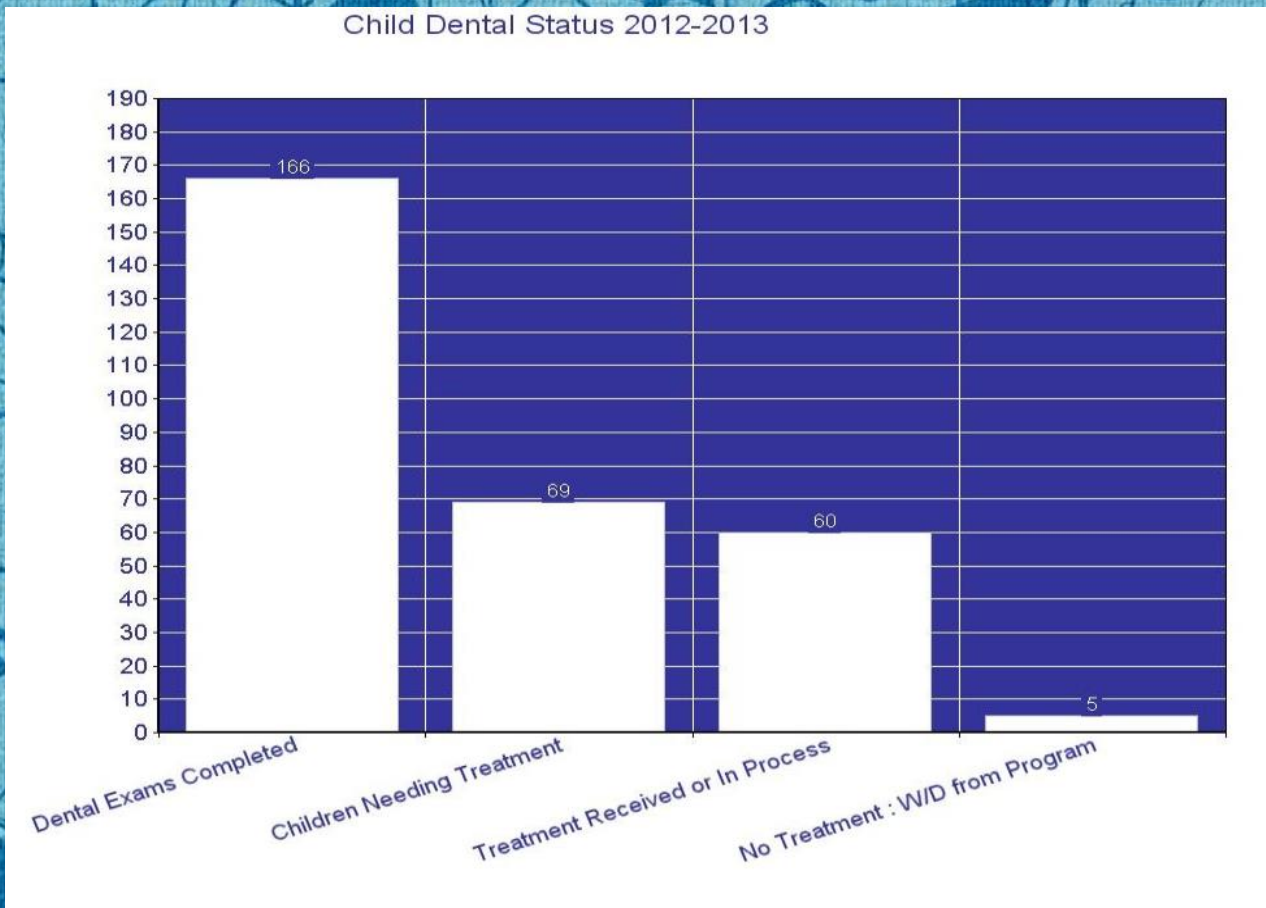
Childhood obesity is an additional concern for our children. Emphasis on positive food choices, decreasing screen time and increasing physical activity. Some of the avenues we use to aid our families in combatting the issue of childhood obesity include: I Am Moving, I Am Learning in the classroom, Chef Combo, and Healthy Beginnings. Nutritional handouts are sent home with the children and nutrition training (healthy snacking & grocery shopping within your budget) at parent meetings is provided by our partnership with the Ohio State Extension service.



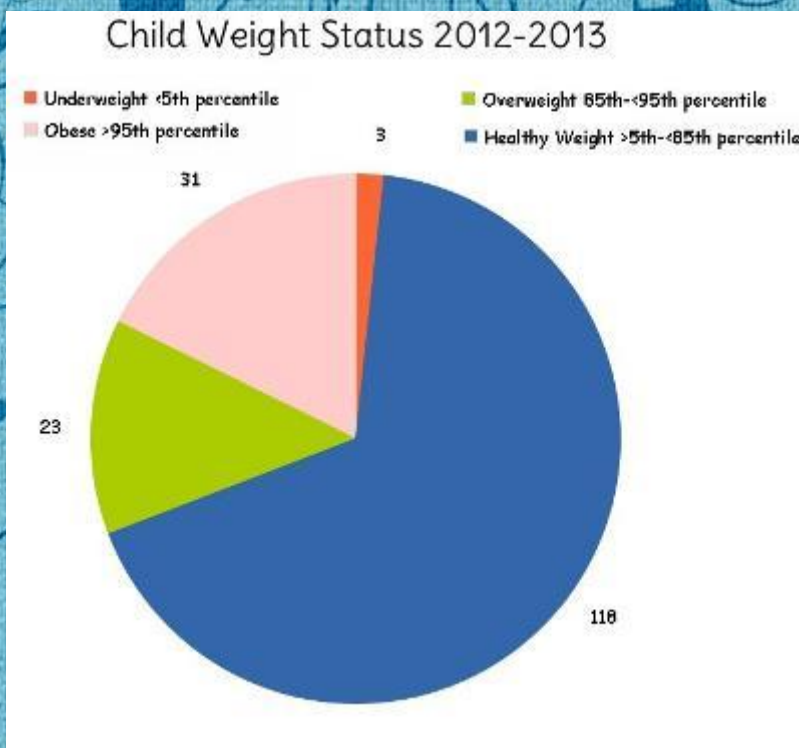
Health & Nutrition Services

By The Numbers

Child Dental Status 2012-2013

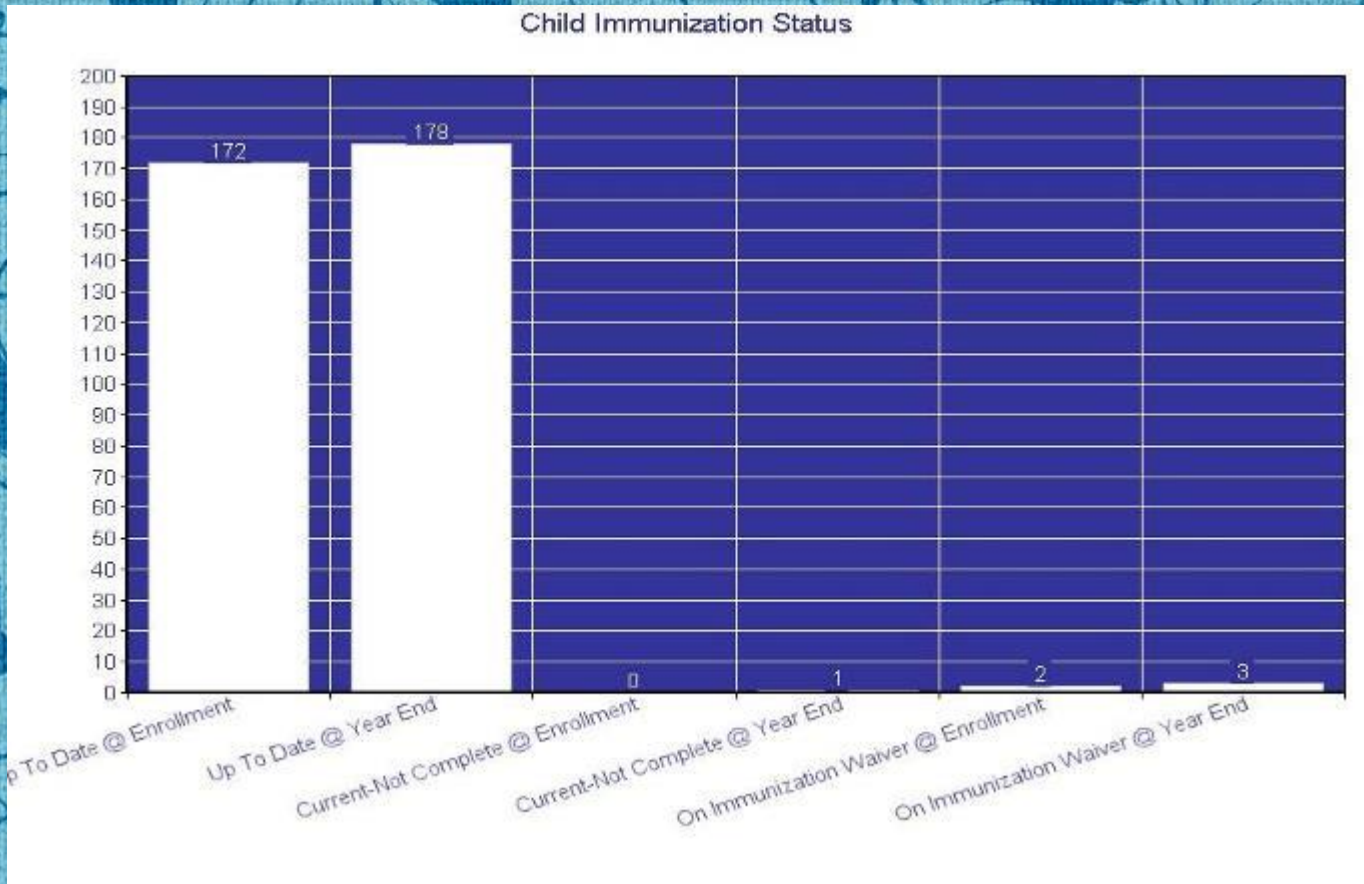


Child Weight Status 2012-2013



Health & Nutrition Services

By The Numbers



Number Who Received Treatment for the Following Chronic Conditions:

Anemia	1
Asthma	10
Hearing Difficulties	2
Vision Problems	18
High Lead Levels	0
Diabetes	1

Newly Implemented School Safety Measures

As stories of school violence and tragedies unfold around the nation, we at Fayette County Early Learning Center have implemented additional security measures in our center. We are proud to say that both of our centers have installed keypad locking systems to all classroom doors and second story levels. Doors are kept shut and locked while children are present in the buildings. All visitors are required to sign in at the main lobby and are then issued a visitor pass prior to entering the classroom areas.



Health & Nutrition Services

By The Numbers

Early Head Start 2012-2013

	At Enrollment	At End of Enrollment
Up to Date on Age Appropriate Preventative and Primary Healthcare	79	98
Up to Date on Immunizations	100	107
Current, Not Complete on Immunizations	0	2
Children with Health Insurance	110	110
Children with Medical Home	96	110
Children with Dental Home	63	110

Head Start 2012-2013

	At Enrollment	At End of Enrollment
Children with Health Insurance	79	98
Children with Medical Home	100	107
Children with Dental Home	0	2

TRANSPORTATION SERVICES

Fayette County Early Learning Center Transportation Services focus on

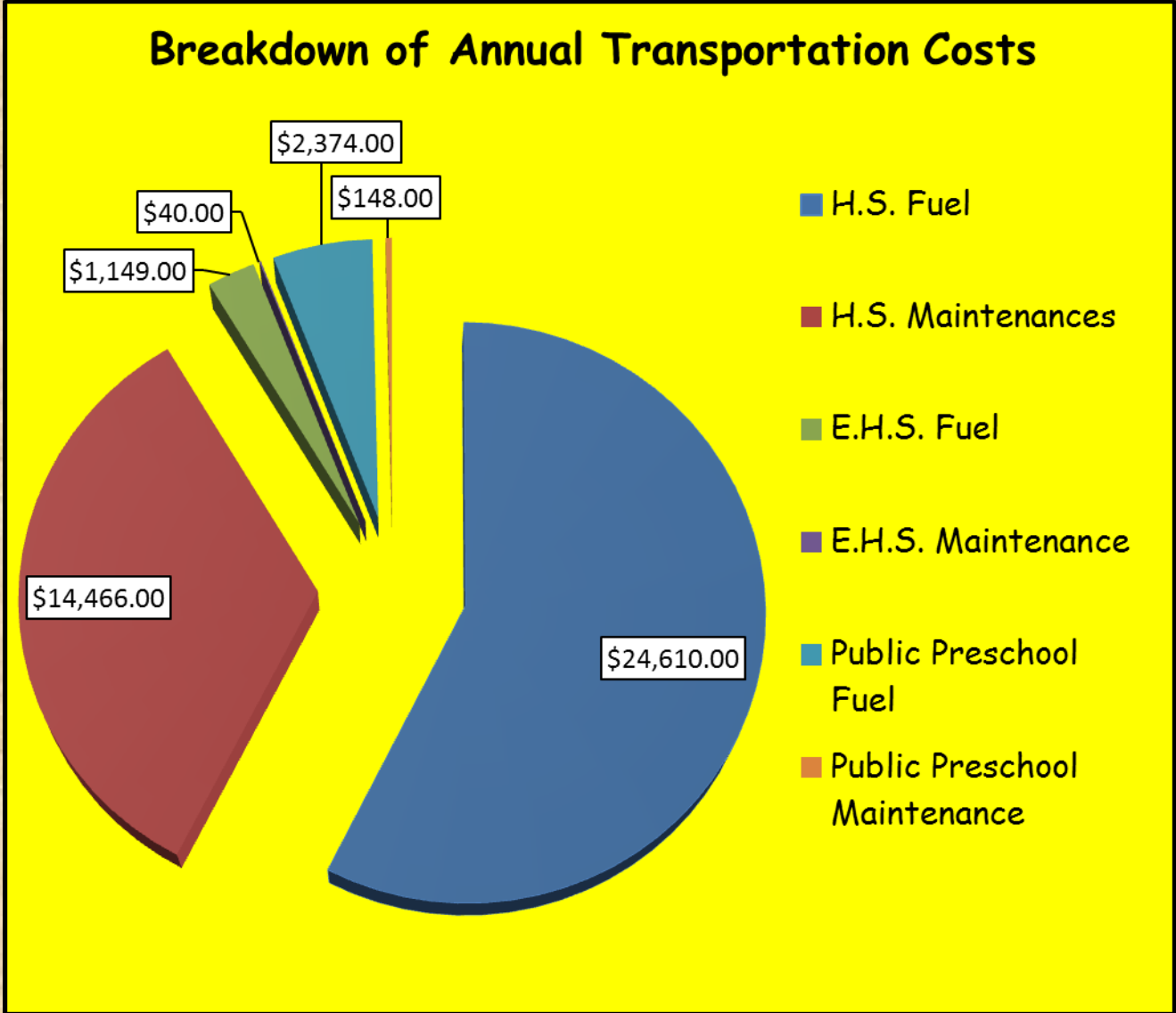


transporting students safely, providing activities and songs while on the bus and teaching the children and families safe bus procedures. Transportation services involve the pick-up and discharge of children at regularly scheduled times to their pre-arranged sites. Head Start Transportation Services also accommodates field trips for additional learning experiences for children. Assistance with transportation is offered for families in need to out of town dental/medical appointments during the program

year. Head Start Transportation staff includes 5 CDL licensed drivers, 5 Bus Monitors, 2 Substitute drivers, and 1 Transportation Manager. Buses transport approximately 180 children to and from the centers. Experiences on the bus are an important part of preparing children and families for school. We believe the bus should be an extension of the classroom. Bus monitors provide activities to keep the children engaged in learning. In addition to busing, 2 cars provide transportation for Home Based Visitors which serve a total of 63 children and pregnant mothers in their homes. Assistance is offered to families for appointments as needed.



Transportation Costs



Accountability--Quality Assurance-- External Review

Monitoring the goals and activities of Head Start and Early Head Start programs is an ongoing process. Through the use of regular self-assessments, the Tri-Annual Federal Review, and an annual fiscal audit, Fayette County Early Learning Center Head Start and Early Head Start are able to maintain a high quality program and participate in continuous program improvement.

Audit Findings

The annual A-122 fiscal audit had no findings.

Most Recent Review Findings

From 5/22/2011 to 5/23/2011, the Administration for Children and Families (ACF) conducted an on-site monitoring follow-up review of the CAC of Fayette County, Inc.—all findings were corrected and program was found to be in compliance. (Most recent review)