

FAYETTE COUNTY EARLY LEARNING CENTER



Annual Report
2019-2020

Mission Statement

The mission of the Fayette County Early Learning Center is to EMPOWER the children and families of Fayette County through Education, Motivation, Provision of Oppportunity, Wellness, Encouragement and Respect.

Table of Contents

1. About Our Program
2. About Our Community
3. Program Staff & Services
4. Services Breakdown
5. CLASS Assessment Data
6. Early Head Start Assessment Data
7. Early Head Start CCP Assessment Data
8. Head Start Assessment Data
9. Head Start Assessment Data cont.
10. Kindergarten Preparation
11. Health & Nutrition Services
12. Building Leaders
13. Parent Involvement
14. Funding & Budgetary Information
15. Program Operations

About Our Program



Fayette County Early Learning Center is a comprehensive child development program offering services to pregnant mothers and children birth to five years old. Fayette County Head Start is federally funded and serves all of Fayette County. Fayette County Head Start serves 148 Head Start children, 75 Early Head Start home-based children and 60 children through the Early Head Start Childcare Partnership.

Early Head Start: Operates full year program with socializations 2-3 times per month. Early Head Start places an emphasis on parents as their child's first teacher. Home Visitors partner with families to provide developmentally appropriate educational activities that meet the individual needs of the child. Home Visitors guide parents on how to use the home environment to provide learning opportunities for their child. Families are provided health and nutrition resources, social services and developmental screenings for their child.

EHS-CC Partnership: Operates year round in our partnership sites: Rock-A-Bye Early Learning Center: 3 Star Step Up to Quality rated (Fayette), Champions in the Making Wilson Center: 1 Star Step Up to Quality rated (Clinton) and Sunrise Sunset: 5 Star Step Up to Quality rated (Highland). The Early Head Start Partnership provides enhancement services to child care centers to increase quality of services for all infants and toddlers. All infants and toddlers benefit from lower ratios, increased staff qualifications, parent education and training classes, new equipment and materials. The grant provides slots for 20 individual children in each partner county. These children additionally receive family social services, mental health services, nutrition and health services and referral services.

Head Start: Operates two centers, Washington Court House and Jeffersonville. Both centers are rated 5 STAR through Step Up To Quality (SUTQ). SUTQ is a Five Star quality rating system that is administered by the Ohio Department of Education and the Ohio Department of Job and Family Services. Head Start provides age and developmentally appropriate activities with a strong emphasis on language and math development. We currently use the Creative Curriculum which is aligned with the Ohio Early Learning Content Standards, Head Start Early Learning Outcomes Framework and School Readiness Goals.

Health and nutrition are key components to our Head Start program. All children receive height, weight, vision, hearing, nutrition, speech, developmental and social emotional screenings yearly.

The program serves not only the children, but the entire family. Social service area and in-depth family partnerships include: parenting curriculum, assessments, goal setting, referrals, and follow-up.

About Our Community

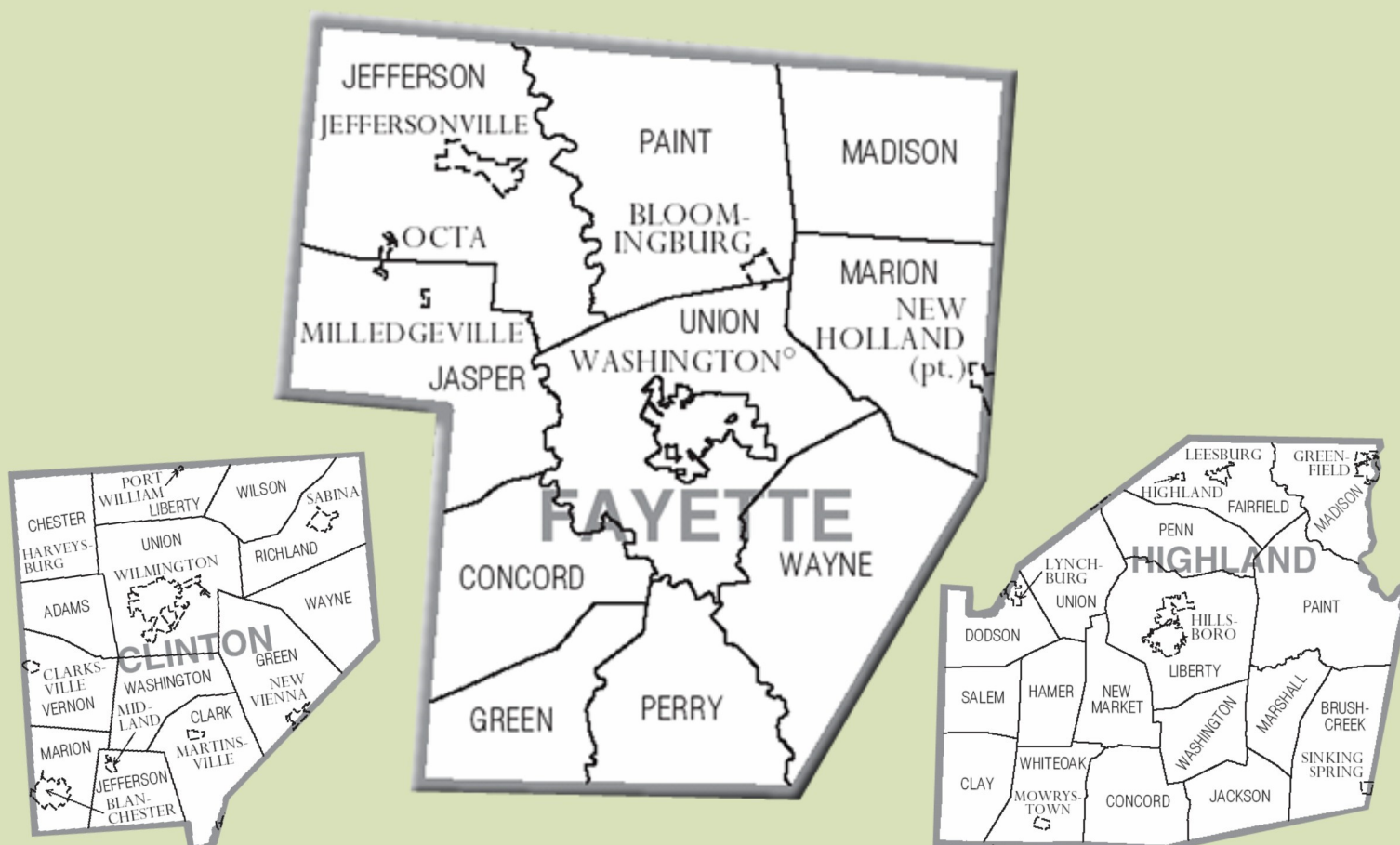
Fayette County is located in the state of Ohio. According to the 2015 census estimates, it has a population of 28,800, which is a decrease of .8% from 2010. Its county seat is Washington Court House.

Based on these census estimates, the median household income of Fayette County residents was \$37,619. 20.1% of residents live in poverty. The ethnicities represented include: white (94.7%), followed by Black (2.4%), Hispanic (1.9%), Asian (0.7%) and American Indian (0.3%).

The county residents under the age of 5 is 6.1%.

Head Start centers are located in Washington Court House and Jeffersonville. These centers provide classroom experiences for children from the following cities: Bloomingburg, Jeffersonville, Washington Court House, Milledgeville, New Holland, Greenfield (partially in Highland and Ross Counties) and Octa. Early Head Start services are provided through the Home-Base option. Families are enrolled based on their level of need.

The Early Head Start Partnership serves three center based child care sites: Rock-a-Bye (Fayette), Wilson (Clinton) and Sunrise Sunset (Highland).



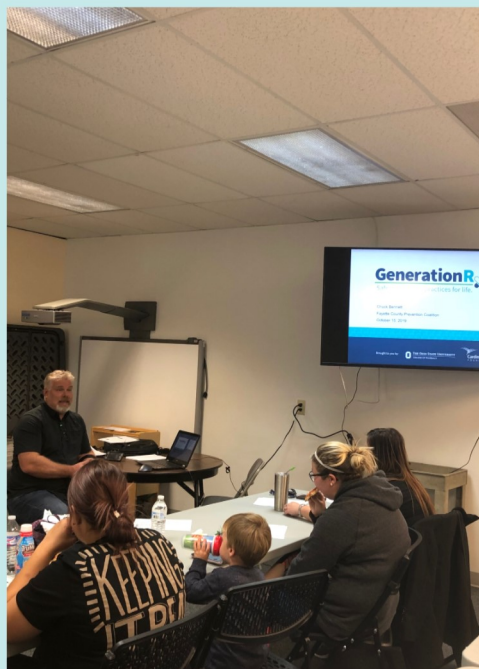
FCELC Program Staff

Our staff consists of 66 individuals who fill the following roles: Child Development and Health Staff, Family Services Support Staff, Transportation Staff and Program Design/Management Staff. Work history verification, reference checks and criminal records checks are completed on all Fayette County Early Learning Center staff.

Of our 66 staff members, 33 of our employees have an Associate's degree or higher. The breakdown of those 33 is as follows: 4 with MA, 15 with BA, 11 with AA and 2 LPNs. In addition to this, 13 employees have CDAs, 2 are currently enrolled in CDA program and 10 are currently enrolled in a college program. 100% of our staff are certified in Infant, Child and Adult CPR and First Aid. 100% of our staff have Professional Development Plans.

Services Provided

At the Fayette County Early Learning Center we strive to E.M.P.O.W.E.R. the families we serve through **E**ducation, **M**otivation, **P**rovision of **O**ppportunity, **W**ellness and **R**espect. Our program does this by providing nutritional services, educational services, health referral services, family educational services, disability services, prenatal and home base services, as well as mental health services with both on and off site consultations.



Services

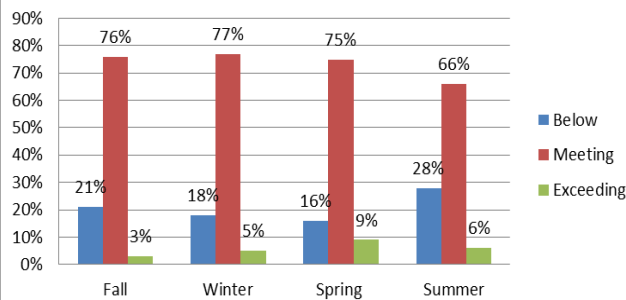
Enrollment Data	Head Start	Early Head Start	Early Head Start-CCP
Number of funded slots	148	75	60
Number of children served during program year	169	110	101
Number of pregnant women served	0	25	0
Number of families served	159	77	86
Number of children enrolled as receiving public assistance (SSI/TANF/OWF)	29	13	6
Number of children enrolled as homeless	15	17	22
Number of children with disabilities receiving special services	24	11	7
Number of children enrolled as foster child	4	5	3
Number of children enrolled as income eligible	102	61	62
Number of children enrolled as over-income	15	9	7
Number of children enrolled at 100-130% of Federal Poverty Level	4	5	1



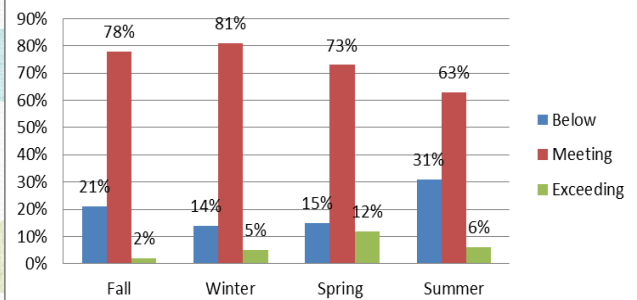
Assessment Results

The following represents the development of the home-based infant and toddler children over the Program year 2019-2020. The number listed above each bar is the percent out of 100 that are below, meeting or exceeding typical development.

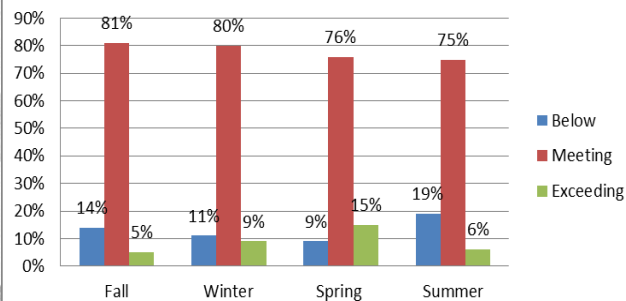
Mathematics
Early Head Start 2019-2020



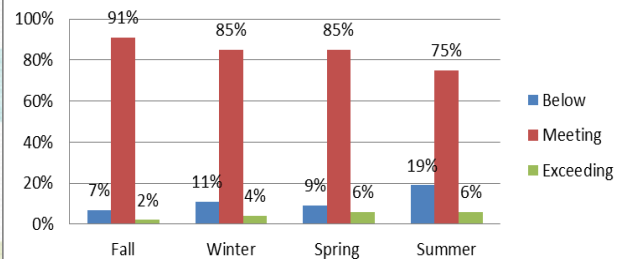
Language
Early Head Start 2019-2020



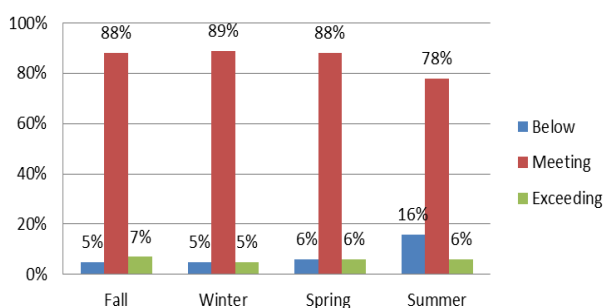
Literacy
Early Head Start 2019-2020



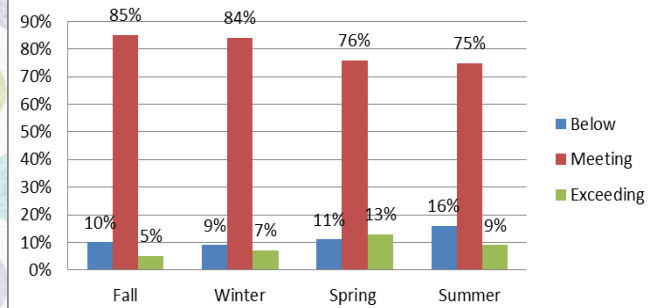
Social Emotional
Early Head Start 2019-2020



Cognitive
Early Head Start 2019-2020



Physical
Early Head Start 2019-2021

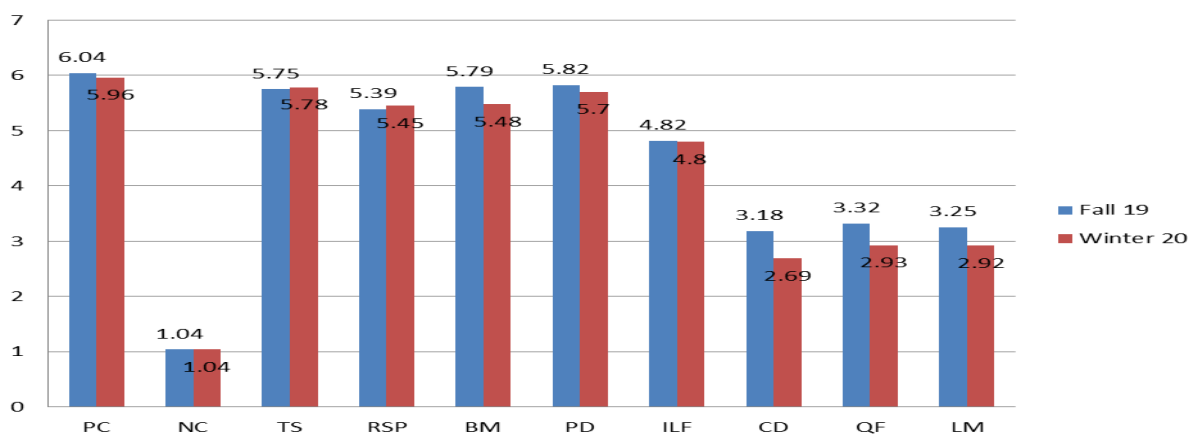


CLASS Assessment Data

The Classroom Assessment Scoring System, CLASS is an observation tool that rates the quality of teacher interactions. CLASS uses a numbered scale of 1-7, with seven being the highest. The CLASS is split into three domains that are comprised of 10 dimensions listed below:

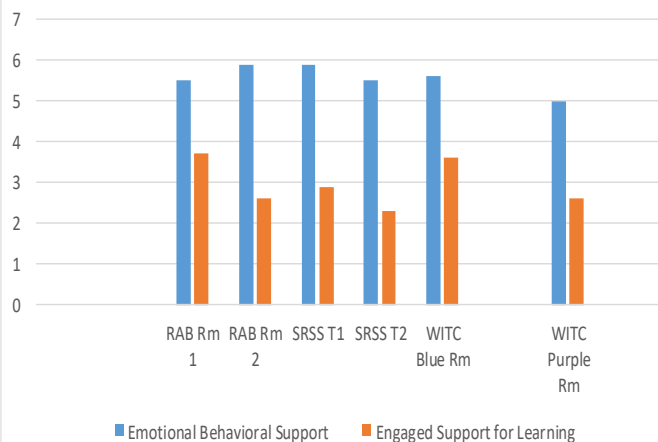
- *Emotional Support which includes: Positive Climate, Negative Climate, Teacher Sensitivity, and Regard for Student Perspectives: This area refers to specific teaching behaviors that help children develop warm, supportive relationships, experience enjoyment and excitement about learning, feel comfortable in the classroom, and experience appropriate levels of autonomy or independence.
- *Classroom Organization which includes: Behavior Management, Productivity, and Instructional Learning Formats: This area describes specific teaching behaviors that help children develop skills to regulate their own behavior, get the most learning out of each day, and maintain interest in learning activities.
- *Instructional Support which includes: Concept Development, Quality of Feedback, and Language Modeling: This area refers to specific teaching behaviors that support children's cognitive and language growth.

Head Start CLASS Scores Fall 2019 and Winter 2020



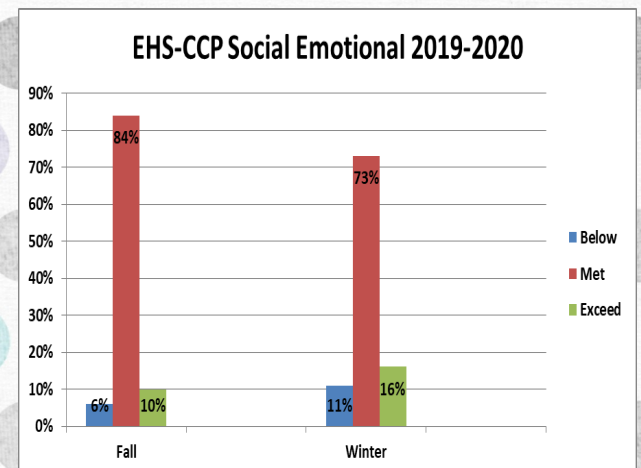
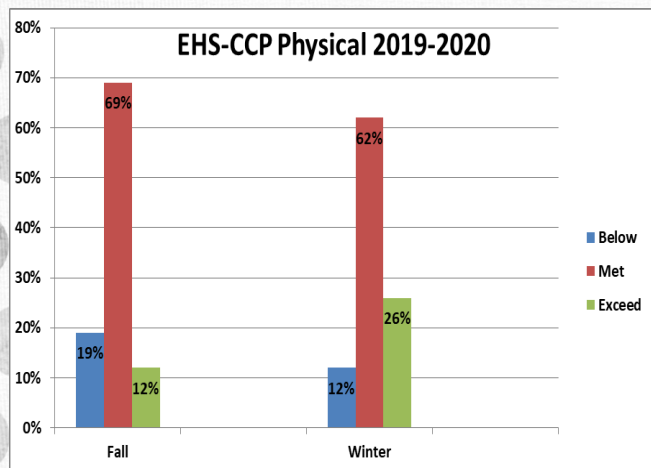
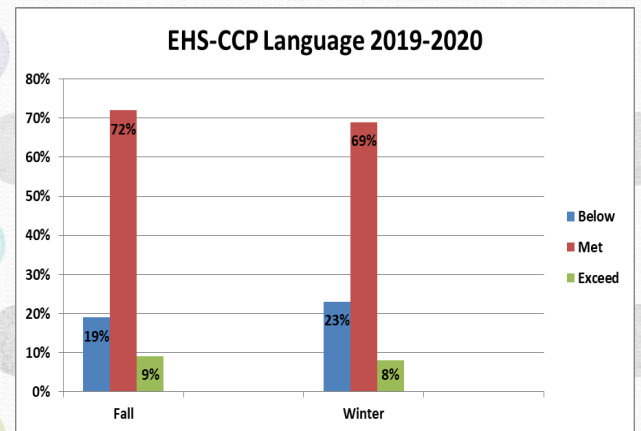
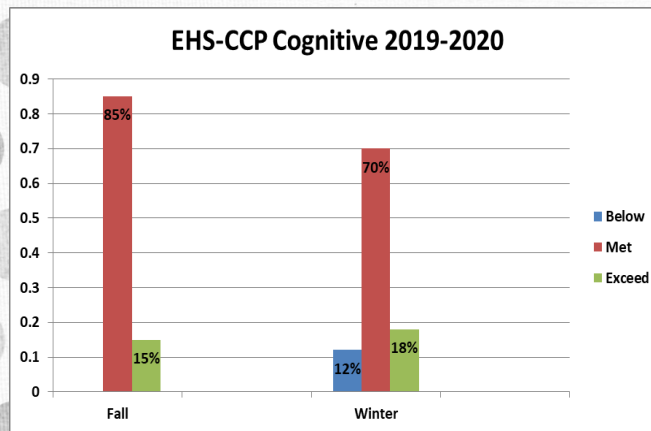
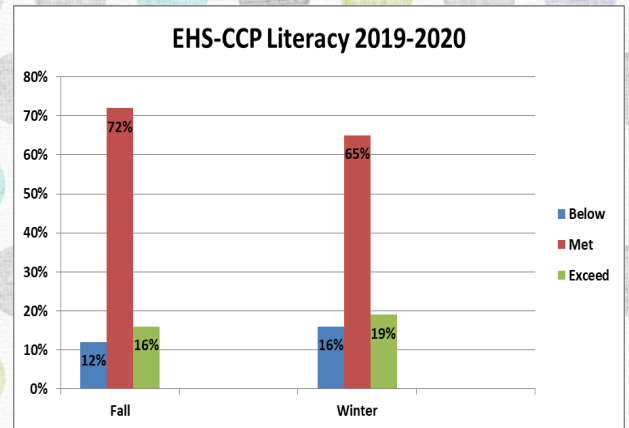
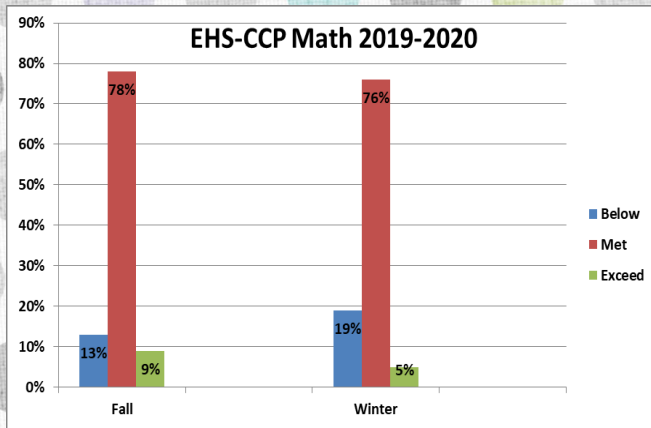
Infant/Toddler Classroom Assessment Scoring System (CLASS) is a tool used to assess the classroom environment. CLASS is age specific, so Infant CLASS is different than Toddler CLASS. Currently, only Toddler CLASS is needed in the CCP. The highest possible score in CLASS is a 7 in all areas. A team of 3 certified observers assess the partner classrooms on a quarterly basis. Below are the results of the CLASS assessment for Fall 2019. Due to COVID and state closing of child care, Winter, Spring and Summer CLASS were not able to be completed.

EHS-CCP Toddler CLASS Fall 2019



Assessment Results

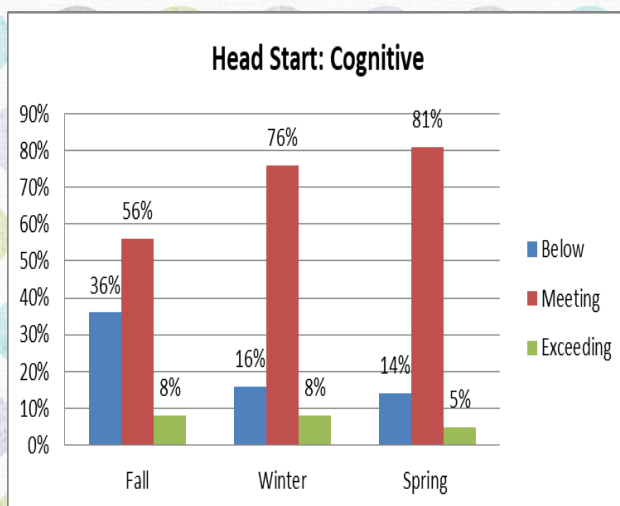
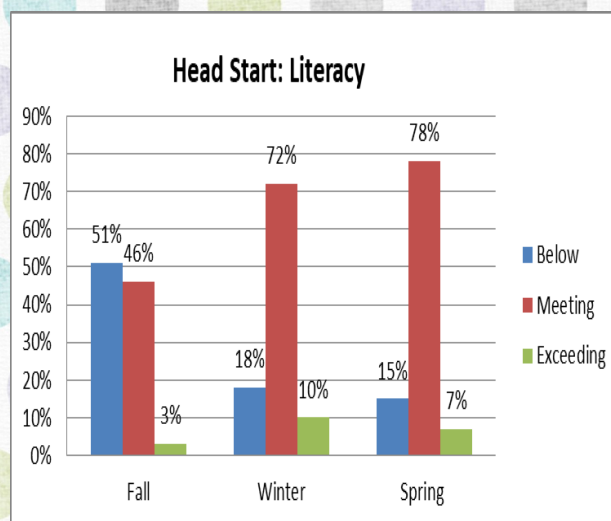
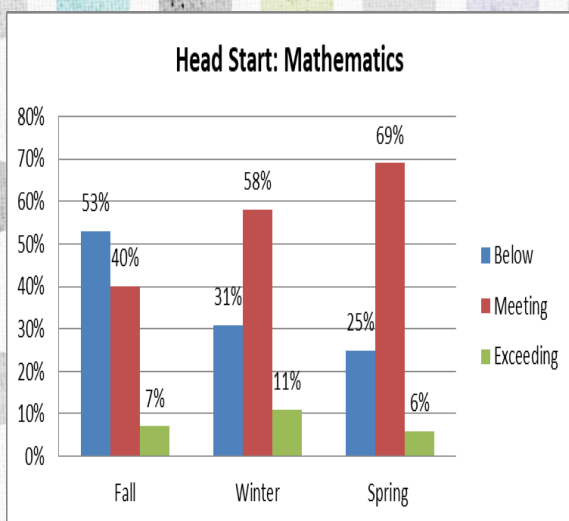
Teaching Strategies Gold is also used as the individual child assessment system in childcare centers to determine the development of children Birth-3. All teachers must pass a reliability test before inputting observational data on children. The tool then reports where the children are according to their development levels and chronological age.



Assessment Results

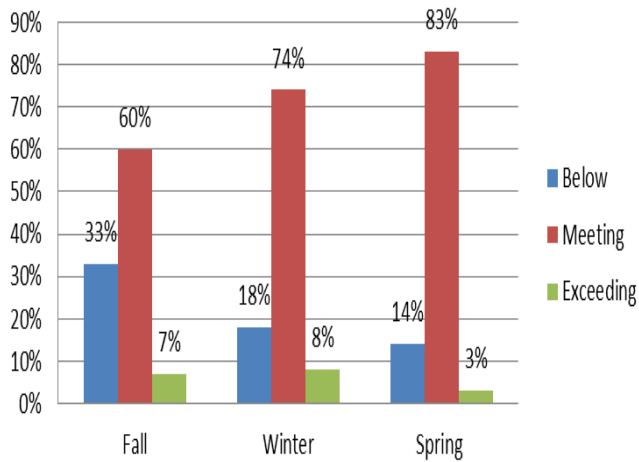
Both Head Start and Early Head Start utilize Teaching Strategies Gold to screen children in a multitude of significant areas to gauge each child's growth throughout the program year.

The following charts represent the development of the preschool children over the Program year 2019/2020. The number listed above each bar is the percent out of 100 that are below, meeting or exceeding.

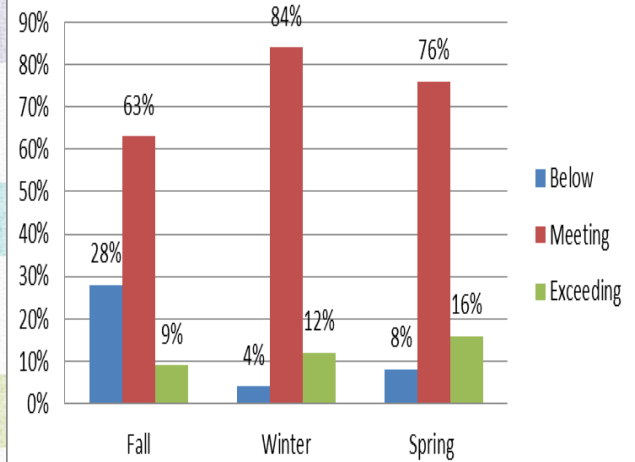


Assessment Results

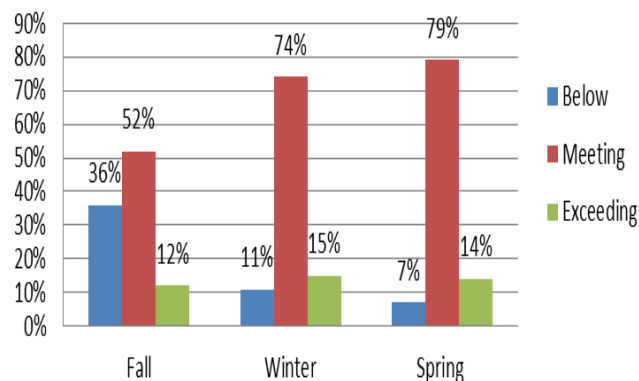
Head Start: Language



Head Start: Physical



Head Start: Social Emotional



Play is often talked about as if it were a relief from serious learning. But for children, play is serious learning. Play is really the work of childhood.

Kindergarten Preparation

Throughout the school year, teachers worked with children on kindergarten readiness skills. Each child was assessed using Teaching Strategies Gold. Individual goals were established based on the child's current and emerging skills. Kinder Camp is an opportunity for parents of children transitioning to kindergarten to meet with teachers and go over assessment data, meet public school teachers/administrators, and create activities to help their children continue to learn over the summer months. Unfortunately, due to COVID Kindercamp was cancelled this program year.

A kindergarten folder containing copies of shot records, birth certificate, custody papers, and social security card is provided to the parents. Parents are informed of upcoming registration dates and times. At the conclusion of the school year, the teachers send home ideas and suggestions for the child to work on over the summer months.



Students who are transitioning into the local school districts for Kindergarten are given the opportunity to visit their future school on the annual Kindergarten field trip. However, due to COVID the field trip had to be cancelled. Individual visits could be scheduled by families with their respective schools.



Health & Nutrition Services

Our Head Start children begin their health screenings at our Child Screening Days in August. Through collaborative efforts with our community professionals, we offer on-site physical exams, dental exams, fluoride treatment, hemoglobin, lead, vision, speech, hearing and developmental screenings. Parents are made aware of any needed follow-up and have access to our community professionals to discuss their child's needs. These screening days are extremely helpful to both parents and staff. Parents are able to obtain everything their child needs in one visit and staff are able to complete all needed developmental and sensory screenings.

Dental follow-up is the biggest concern for our Head Start children. Our program is a rural program and access to the specialized pediatric dentistry that the majority of our children need, is not available within our county. We have three out of town pediatric dental partnerships, as well as a local family dental partnership. We are thrilled to provide an on-site pediatric dental consultation for families to establish a dental treatment plan for their child, including both in office and outpatient hospital treatment. We also offer transportation assistance to all families which enables them to keep their appointments and obtain their child's dental care. Due to the pandemic, many dental surgeries and in office treatments were cancelled from March to the end of the program year.

Childhood obesity and underweight children are additional concerns for our children. Emphasis on positive and healthy food choices, decreasing screen time and increasing physical activity is stressed. Utilizing I Am Moving, I Am Learning in the classroom, Healthy Beginnings, Nutritional handouts and nutritional trainings including Healthy Snacking, Grocery Shopping and Budgeting Your Money are provided at our Parent Meetings facilitated by our partnership with our Ohio State Extension office.

Sadly, many children had treatment plans that could not be completed, due to the hospitals closing off outpatient surgeries and dental offices being closed till midsummer. Data supporting the effects of our nutrition efforts were unknown with the abrupt closing of in person Head Start services. A second height and weight status was never obtained. For our Early Head Start, the temporary discontinuation Well Baby Checks and immunizations for a 4-5 month period was another negative impact of the pandemic.

Health & Nutrition Services

By The Numbers

	Head Start		Early Head Start		EHS-CCP	
% Enrolled Children Who Received Physical Exams*	@ enroll	@end	@ enroll	@end	@ enroll	@end
	71%	98%	67%	72%	73%	73%
% Enrolled Children Who Received Dental Exams	95%					



Building Leaders

We build leadership in our program by providing opportunities for parents and community representatives to participate in our Parent Meetings, Policy Council and Governing Board.

GOVERNING BOARD MEMBERS

Godwin Apaliyah	Michael Gibbons-Camp
William Dent	Tiffany Graves
James Garland	Dale Lynch
Helona McCracken	Sharon Gibbs
Faye Williamson	Cheryl Royster
Mike Henry	Stephanie Roe
Angela Preston	Bob Kinzer
Trevor Patton	Vicki Coffman
Kathleen Hyer	Kuddy Thomas

POLICY COUNCIL MEMBERS

President/HS Parent: Stephanie Roe

Vice President/EHS Parent: Cheyenne Stephenson

Secretary/Jeffersonville Parent: Heather Moore

Fayette County Health Department: Holly Johnson

WCH Local Schools: Missy Marsh

Fayette County DJFS/Children's Services:

Marcie Hamilton

Starting Gate: Jill Phillips/Sylvia Call

Early Head Start/CCP Parent: Katey Schleich

Jeffersonville HS Parent-Tabitha Anderson

Jeffersonville HS Parent Kathleen Hyer

EHS Parent– Tiffany Graves

WCH HS Parent– Emily Jones

Gifted leadership occurs when heart and head – feeling and thought – meet. These are the two winds that allow a leader to soar.

Daniel Goleman

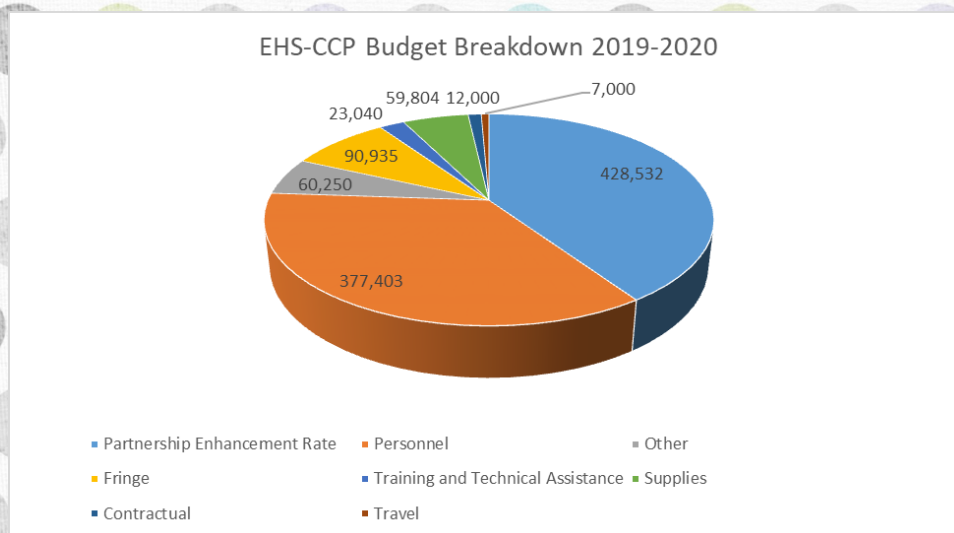
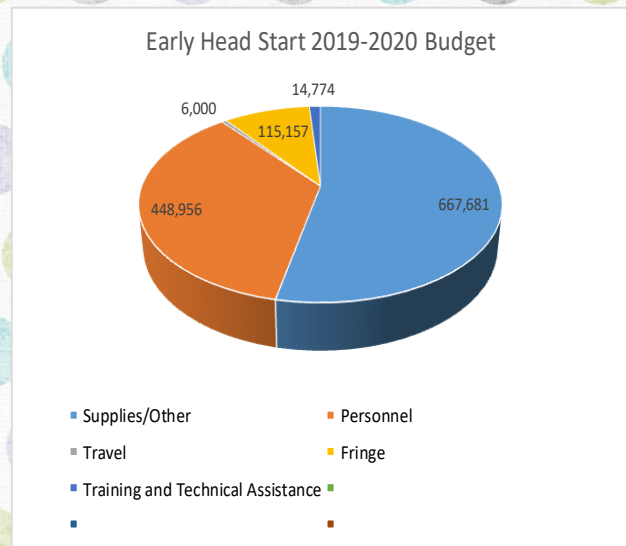
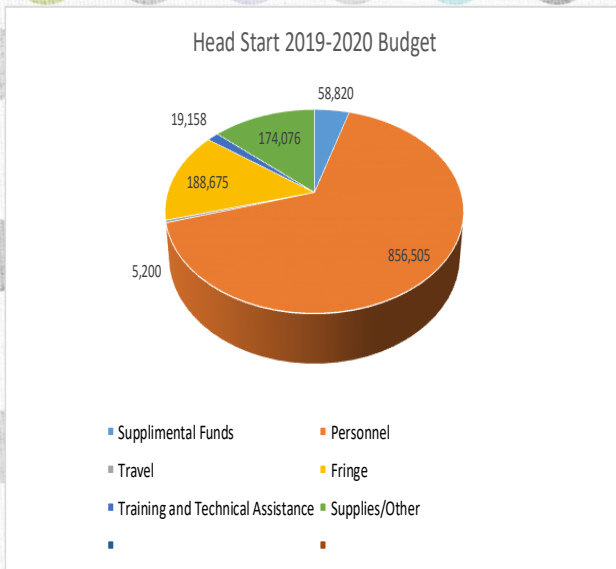
Parent Involvement

From the time of enrollment, parents are encouraged and offered many opportunities to be involved in our program. As their child's first teacher, parents have an important role in their child's educational experience. Parent involvement opportunities include, but are not limited to participation in: Policy Council, Governing Board, Early Head Start home visits, Head Start/Early Head Start parent meetings, Early Head Start playgroup socializations, Head Start classroom parent volunteers, as well as other various committees throughout the program year. Our teachers and home visitors encourage parents to continue teaching their child at home by providing homework activities and parent/child reading logs.



Funding/Budgetary Information

Community Action Commission of Fayette County received a total of \$2,002,525 in funds from the Administration for Children and Families (ACF) to administer the Head Start/Early Head Start program for the 2019-2020 program year. These funds included a 1.77 % COLA increase and \$18,000 supplemental grant for the CAC roof. The program is required to obtain \$478,809 in non-federal share. A waiver for \$146,569.51 of those non-federal share funds was submitted due to a decrease in parent involvement with full-day classes and increased volunteer requirements through ODJFS.



USDA FUNDING

USDA 3/1/2018-2/28/2019

Total Reimbursement: \$115,522

Program Operations

Accountability--Quality Assurance--External Review

Monitoring the goals and activities of Head Start and Early Head Start programs is an ongoing process. Through the use of regular self-assessments, the Tri-Annual Federal Review, and an annual fiscal audit, Fayette County Early Learning Center Head Start and Early Head Start are able to maintain a high quality program and participate in continuous program improvement.

Audit Findings

The annual New Uniform Guidance fiscal audit had no findings.

Most Recent Findings

During the 2019-2020 funding year, the Administration for Children and Families (ACF) conducted a Focus Area One review which resulted in zero non-compliance concerns.