

# FAYETTE COUNTY EARLY LEARNING CENTER



**Annual Report  
2020-2021**

## Mission Statement

The mission of the Fayette County Early Learning Center is to EMPOWER the children and families of Fayette County through Education, Motivation, Provision of Opportunity, Wellness, Encouragement and Respect.



# TABLE OF CONTENTS

1. About Our Program
2. About Our Community
3. Program Staff and Services
4. Services Breakdown
5. Class Assessment Data
6. Head Start Assessment Data
7. Head Start Assessment Data Cont.
8. Early Head Start Assessment Data
9. EHS-CCP Assessment Data Continued
10. Kindergarten Preparation
11. Health & Nutrition Services
12. Building Leaders
13. Parent Involvement
14. Funding & Budgetary Information
15. Funding & Budgetary Information Cont.
16. Funding & Budgetary Information Cont.
17. Program Operations



# ABOUT OUR PROGRAM



**Fayette County Early Learning Center is a comprehensive child development program offering services to pregnant mothers and children birth to five years old. Fayette County Head Start is federally funded and serves all of Fayette County. Fayette County Head Start serves 148 Head Start children, 75 Early Head Start home-based children and 60 children through the Early Head Start Childcare Partnership.**

**Early Head Start:** Operates full year program with socializations 2-3 times per month. Early Head Start places an emphasis on parents as their child's first teacher. Home Visitors partner with families to provide developmentally appropriate educational activities that meet the individual needs of the child. Home Visitors guide parents on how to use the home environment to provide learning opportunities for their child. Families are provided health and nutrition resources, social services and developmental screenings for their child.

**Head Start:** Operates two centers, Washington Court House and Jeffersonville. Both centers are rated 5 STAR through Step Up To Quality (SUTQ). SUTQ is a tier based quality rating system that is administered by the Ohio Department of Education and the Ohio Department of Job and Family Services.

Head Start provides age and developmentally appropriate activities with a strong emphasis on language and math development. We currently use the Creative Curriculum which is aligned with the Ohio Early Learning Content Standards, Head Start Early Learning Outcomes Framework and School Readiness Goals.

Health and nutrition are key components to our Head Start program. All children receive height, weight, vision, hearing, nutrition, speech, developmental and social emotional screenings yearly.

The program serves not only the children, but the entire family. Social service area and in-depth family partnerships include: parenting curriculum, assessments, goal setting, referrals, and follow-up.

**EHS-CC Partnership:** Operates year round in our partnership sites: Rock-A-Bye Early Learning Center: 3 Star Step Up to Quality rated (Fayette), Wilson Center: 1 Star Step Up to Quality rated (Clinton), and Sunrise Sunset: 5 Star Step Up to Quality rated (Highland). The Early Head Start Partnership provides enhancement services to child care centers to increase quality of services for all infants and toddlers. All infants and toddlers benefit from lower ratios, increased staff qualifications, parent education and training classes, new equipment and materials. The grant provides slots for 20 individual children in each partner county. These children additionally receive family social services, mental health services, nutrition and health services and referral services.



# ABOUT OUR COMMUNITY

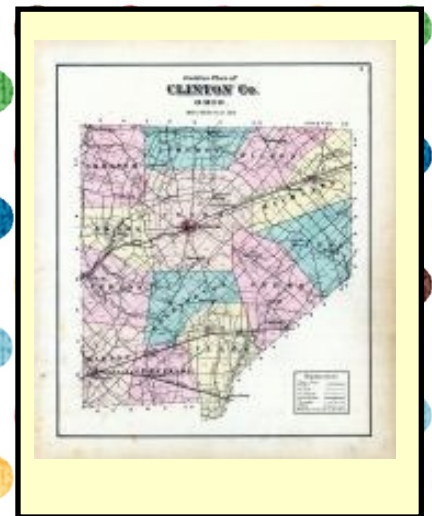
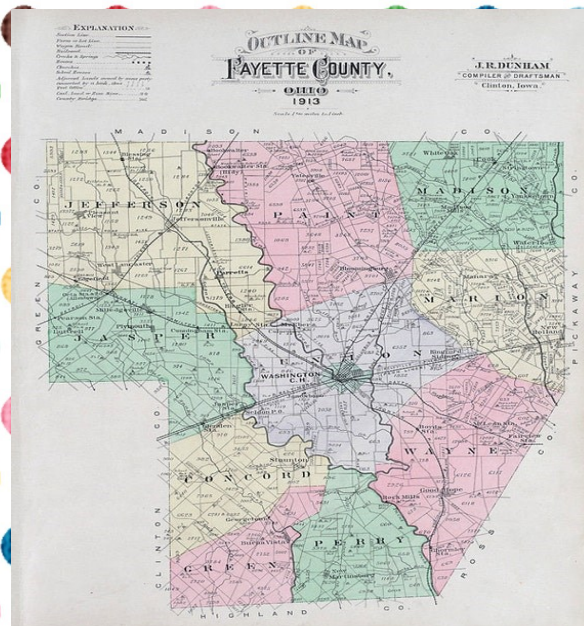
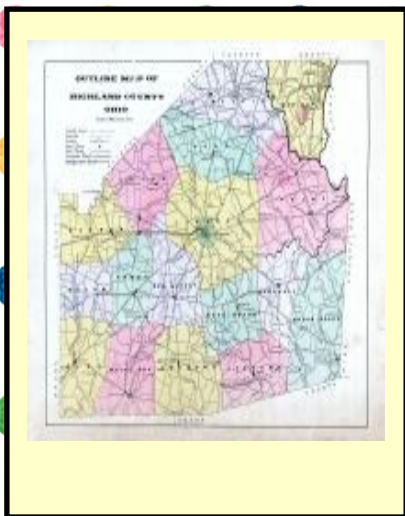
Fayette County is located in the state of Ohio. According to the 2015 census estimates, it has a population of 28,800, which is a decrease of .8% from 2010. Its county seat is Washington Court House.

Based on these census estimates, the median household income of Fayette County residents was \$37,619. 20.1% of residents live in poverty. The ethnicities represented include: white (94.7%), followed by Black (2.4%), Hispanic (1.9%), Asian (0.7%) and American Indian (0.3%).

The county residents under the age of 5 is 6.1%.

Head Start centers are located in Washington Court House and Jeffersonville. These centers provide classroom experiences for children from the following cities: Bloomingburg, Jeffersonville, Washington Court House, Good Hope, Milledgeville, New Holland, Greenfield (partially in Highland and Ross Counties) and Octa. Early Head Start services are provided through the Home-Base option. Families are enrolled based on their level of need.

The Early Head Start Partnership serves three center based child care sites: Rock-a-Bye (Fayette), Clinton County Early Learning Center (Clinton) and Sunrise Sunset (Highland).





# FCELC PROGRAM STAFF

Our staff consists of 63 individuals who fill the following roles: Child Development and Health Staff, Family Services Support Staff, Transportation Staff and Program Design/ Management Staff. Work history verification, reference checks and criminal records checks are completed on all Fayette County Early Learning Center staff.

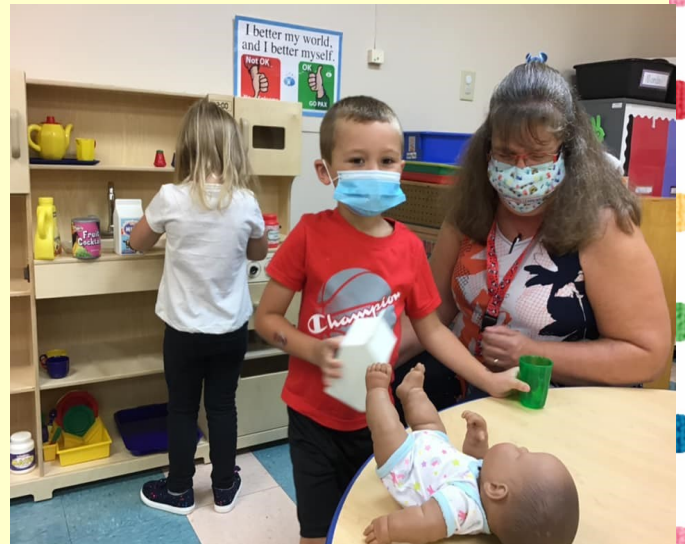
Of our 63 staff members, 31 of our employees have an Associate's degree or higher. The breakdown of those 31 is as follows: 3 with MA, 17 with BA, 11 with AA and 1 LPN. In addition to this, 11 employees have CDAs, 2 are currently enrolled in CDA program and 10 are currently enrolled in a college program. 100% of our staff are certified in Infant, Child and Adult CPR and First Aid. 100% of our staff have Professional Development Plans.

## SERVICES PROVIDED

At the Fayette County Early Learning Center, we strive to EMPOWER the families we serve by providing nutritional services, educational services, health referral services, family educational services, disability services, prenatal and home-based services, as well as mental health. During COVID-19 these services were offered both in person and virtually. The Head Start program offered both in person classes with 9 children in each classroom and virtual learning through Google Classrooms. An average of 18 children chose the virtual option. Families were provided tablets with a preset amount of data on them to use for communicating with the program and to access Google Classroom activities. Virtual families were provided with packets of supplies and activities to extend virtual classroom learning each week. Bus drivers dropped off items to families every Tuesday.

The EHS home-based program also held weekly visits with families virtually. Those families were also provided with learning packets each week to extend the virtual visits with their Home Visitor.

The EHS-CCP option provided services in centers beginning the year using ODJFS pandemic ratios. Centers were closed part of the year due to COVID and staffing shortages. Highland County was closed an additional month, Clinton and Fayette County were just closed a couple of weeks. Despite the centers being closed, the EHS-CCP Liaisons continued to check in on children and families.





# SERVICES BREAKDOWN

Enrollment Data	Head Start	Early Head Start	Early Head Start-CCP
Number of funded slots	148	75	60
Number of children served during program year	93	73	75
Number of pregnant women served	0	16	0
Number of families served	85	59	63
Number of children enrolled as receiving public assistance (SSI/TANF/OWF)	17	10	20
Number of children enrolled as homeless	7	8	9
Number of children with disabilities receiving special services	11	3	6
Number of children enrolled as foster child	5	2	8
Number of children enrolled as income eligible	60	55	68
Number of children enrolled as over-income	4	11	6
Number of children enrolled at 100-130%	0	3	1



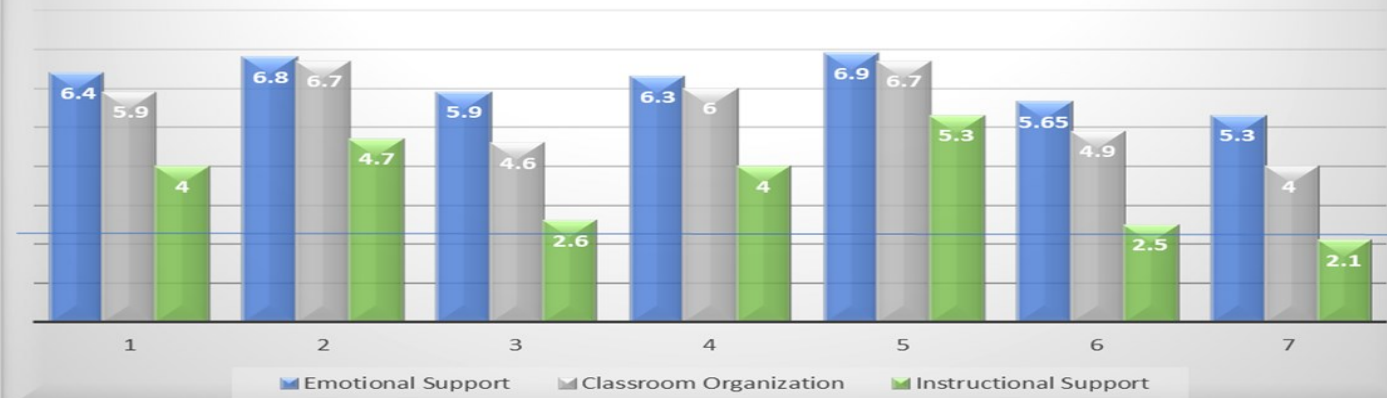


# CLASS ASSESSMENT DATA

The Classroom Assessment Scoring System, CLASS is an observation tool that rates the quality of teacher interactions. CLASS uses a numbered scale of 1-7, with seven being the highest. The CLASS is split into three domains that are comprised of 10 dimensions listed below:

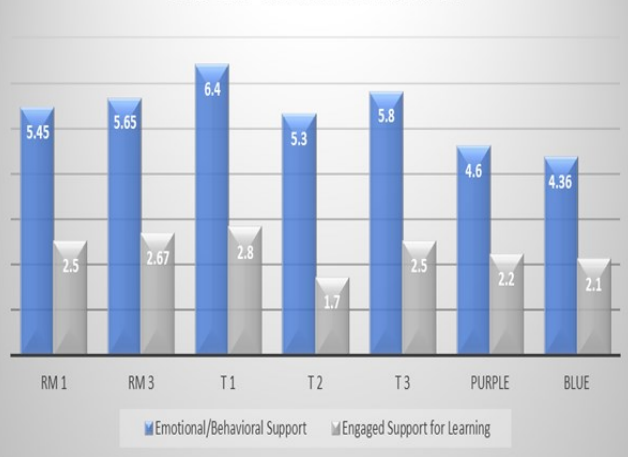
- \*Emotional Support-Positive Climate, Negative Climate, Teacher Sensitivity, and Regard for Student Perspectives: This area refers to specific teaching behaviors that help children develop warm, supportive relationships, experience enjoyment and excitement about learning, feel comfortable in the classroom, and experience appropriate levels of autonomy or independence.
- \*Classroom Organization- Behavior Management, Productivity, Instructional Learning Formats: This area describes specific teaching behaviors that help children develop skills to regulate their own behavior, get the most learning out of each day, and maintain interest in learning activities.
- \*Instructional Support-Concept Development, Quality of Feedback, and Language Modeling: This area refers to specific teaching behaviors that support children's cognitive and language growth.

## Head Start CLASS 20-21

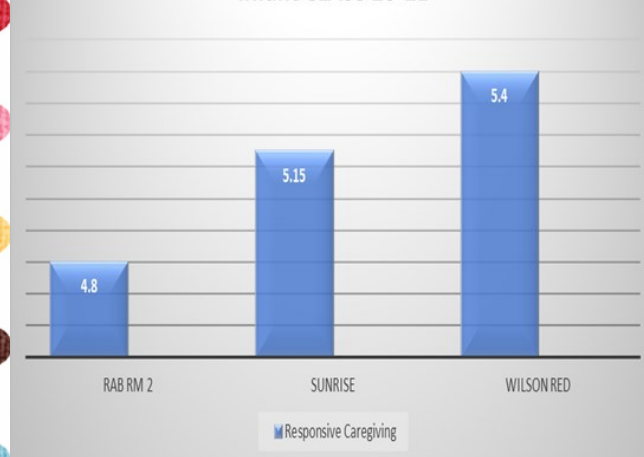


Infant/Toddler Classroom Assessment Scoring System (CLASS) is a tool used to assess the classroom environment. CLASS is age specific, so Infant CLASS is different than Toddler CLASS. The highest possible score in CLASS is a 7 in all areas. A team of 3 certified observers assess the partner classrooms on a quarterly basis. Below are the results of the CLASS assessment for 2020-2021.

## EHS-CCP Toddler CLASS 20-21



## Infant CLASS 20-21

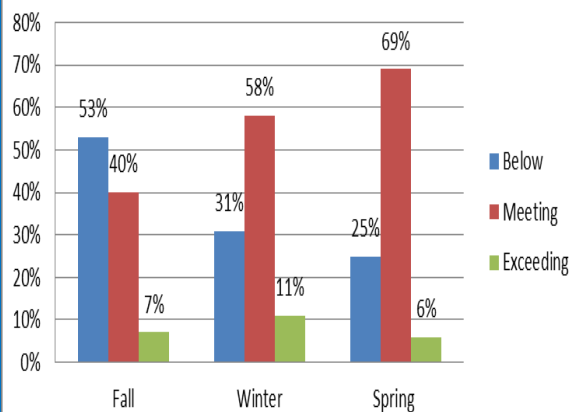




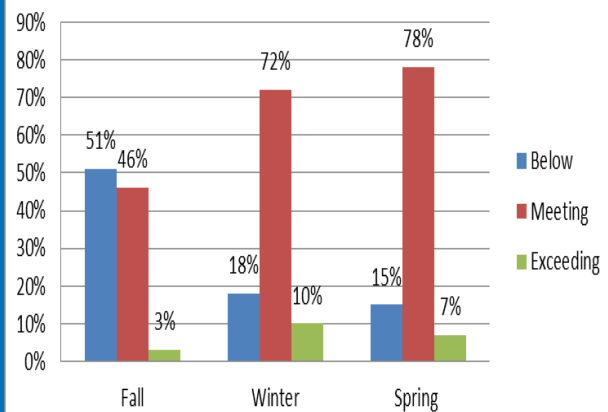
**Both Head Start and Early Head Start utilize Teaching Strategies Gold to assess child development and school readiness for each child throughout the program year.**

The following charts represent the development of the preschool children over the Program year 2020/2021. The number listed above each bar is the percent out of 100 that are below, meeting or exceeding typical development.

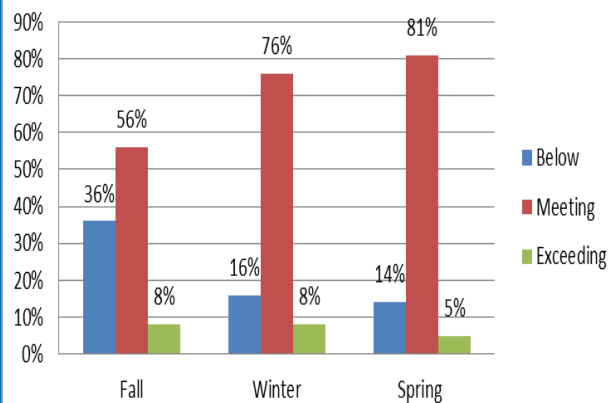
**Head Start: Mathematics**



**Head Start: Literacy**



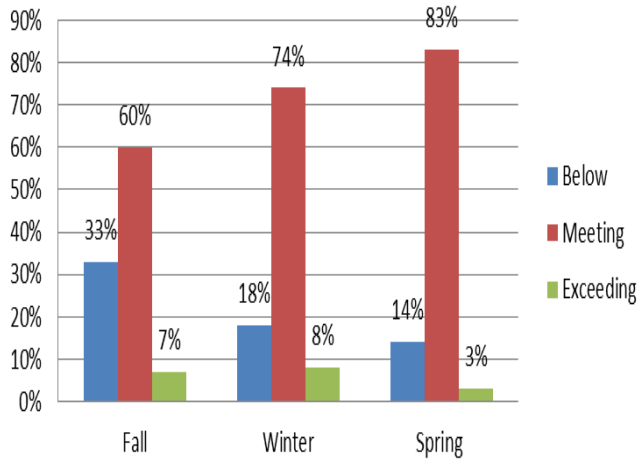
**Head Start: Cognitive**



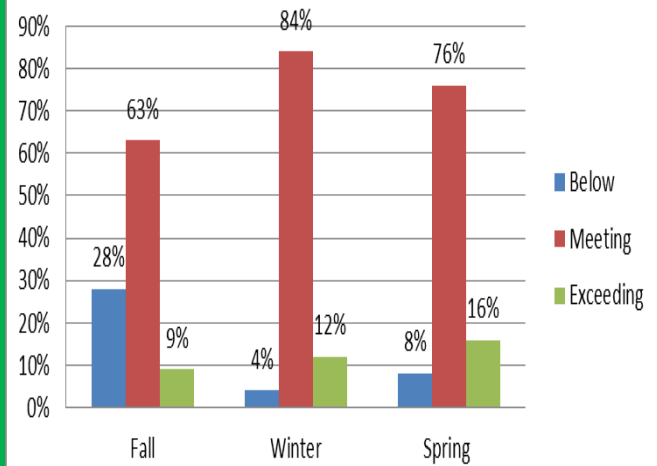


# ASSESSMENT CONT'D.

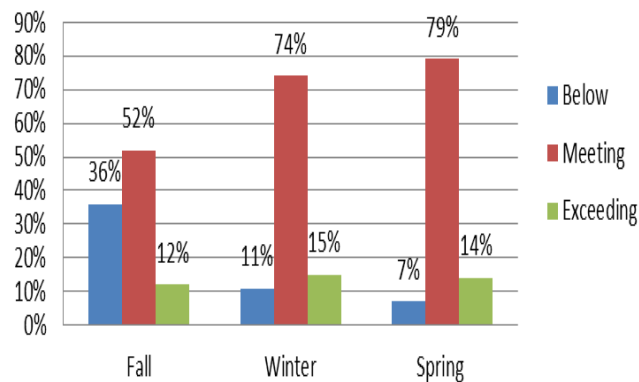
Head Start: Language



Head Start: Physical



Head Start: Social Emotional



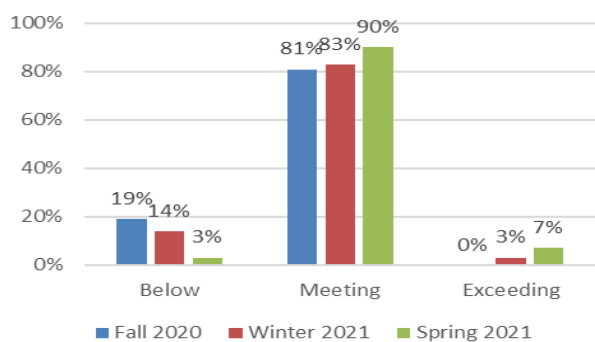
Play is often talked about as if it were a relief from serious learning. But for children play is serious learning. Play is really the work of childhood.

**-Fred Rogers**

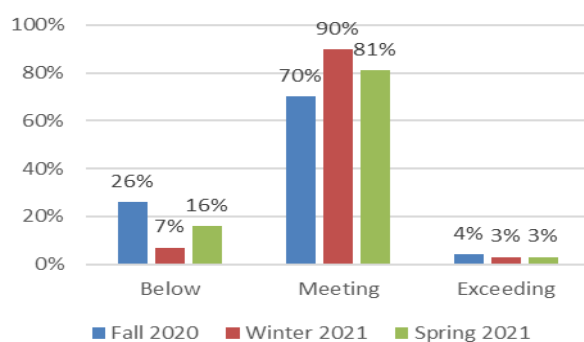


The following represents Teaching Strategies Gold information which provides school readiness development for home-based infant/toddler children over the 2020-2021 program year. The number listed above each bar is the percent that are below, meeting or exceeding typical development.

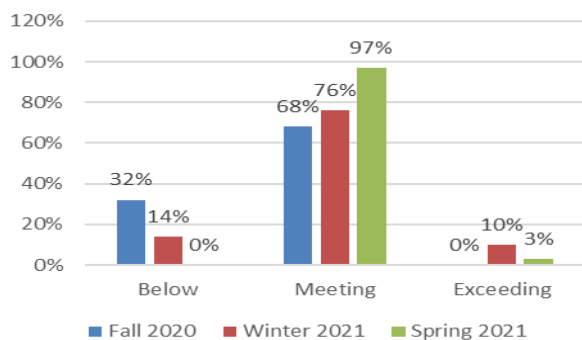
Mathematics  
Early Head Start 2020-2021



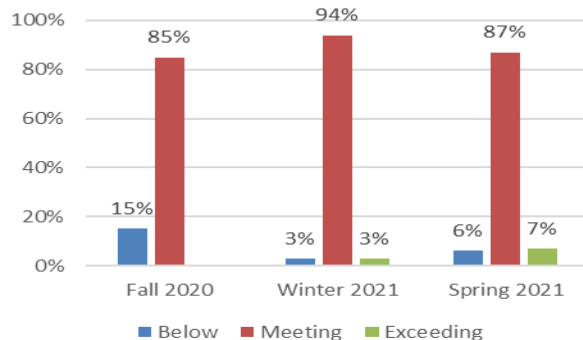
Language  
Early Head Start 2020-2021



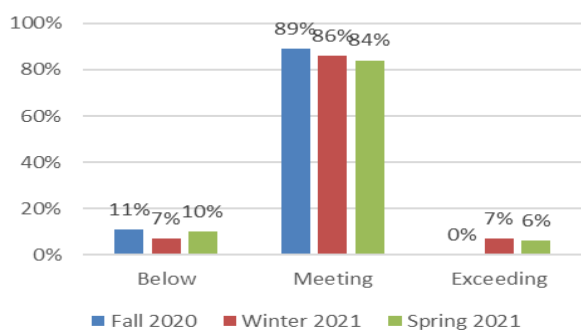
Literacy  
Early Head Start 2020-2021



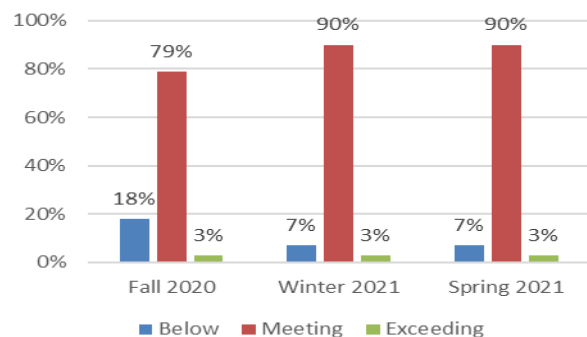
Social Emotional  
Early Head Start 2020-2021



Cognitive  
Early Head Start 2020-2021



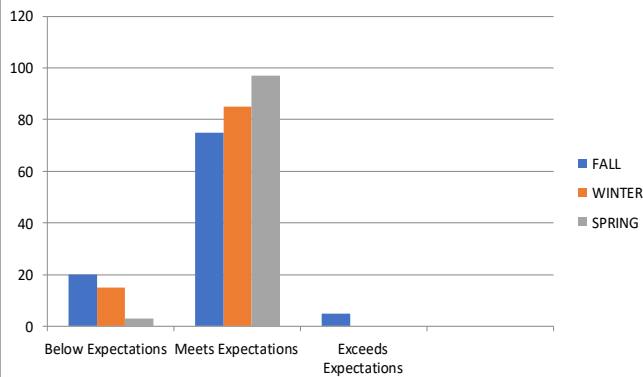
Physical  
Early Head Start 2020-2021



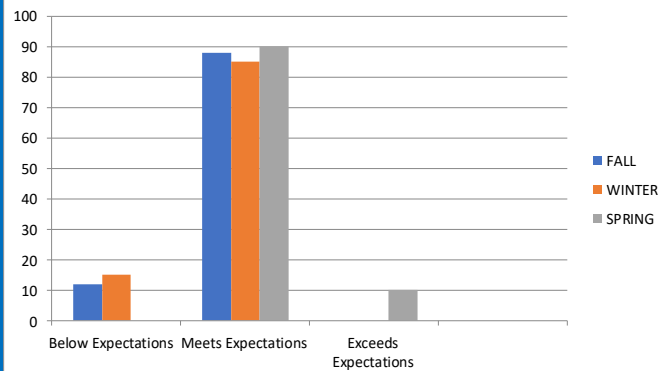


Teaching Strategies Gold is also used as the individual child assessment system in childcare centers to determine the development of children birth-3. All teachers must pass a reliability test before inputting observational data on children. The tool then reports where the children are according to their development levels and chronological age.

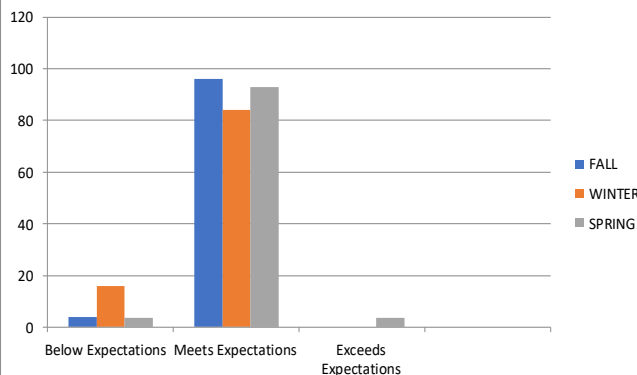
**EHS-CCP 20-21 Math**



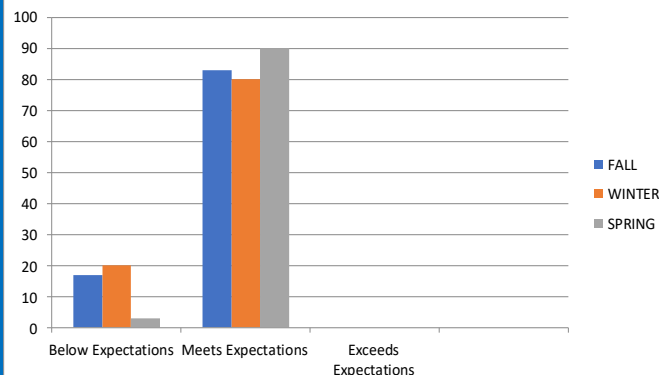
**EHS-CCP 20-21 Literacy**



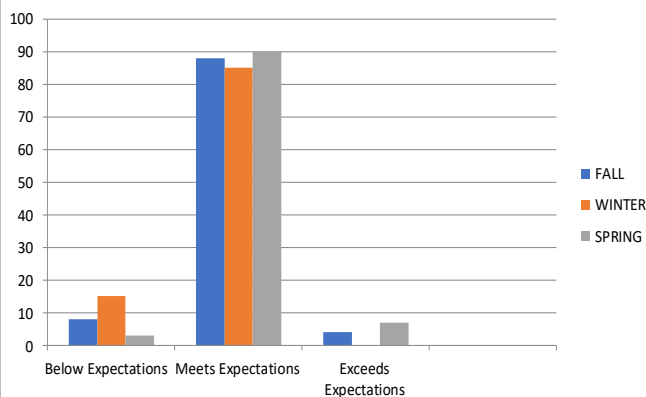
**EHS-CCP 20-21 Cognitive**



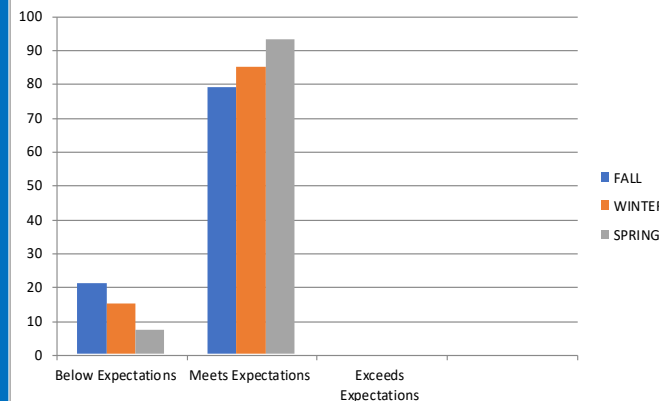
**EHS-CCP 20-21 Language**



**EHS-CCP 20-21 Physical**



**EHS-CCP 20-21 Social Emotional**





# KINDERGARTEN PREPARATION

Throughout the school year, teachers worked with children on school readiness skills to help prepare children for kindergarten. Each child was assessed using Teaching Strategies Gold ongoing assessment. Individual goals were created with families based on the child's current and emerging skills. Due to COVID, this program year we offered a Virtual Kinder Camp to families of children entering kindergarten in Fall 2021. During this Virtual Kinder Camp the teachers presented activities in each developmental domain that the parent and child could complete during the summer to continue to work on developing skills. We also provided video tours from both school districts of the kindergarten classrooms and teachers.

In March 2021, a kindergarten transition folder containing copies of the shot record, birth certificate, custody papers, and social security card is provided to the families. Parents were informed of upcoming registration dates and times. All children received a kindergarten summer learning pack to take home for continued learning.



**Students who are transitioning into the local school districts for Kindergarten were provided with virtual tours in place of their annual Kindergarten field trip.**





# HEALTH AND NUTRITION SERVICES

Due to Covid, we were unable to conduct our annual August Screening Days at which time we provide the resources on site for physicals, dentals, speech, vision, hearing and developmental screenings. Our program and our families truly felt the negative impact of this loss of this event.

Despite the wonderful pediatric dental partnerships that we have established for our families, dental follow-up was a struggle with many of our dental offices and surgeries cancelled due to the pandemic. One pediatric dental practice did not reopen until July 2021. Another struggle was the lack of health screenings and treatments for those families enrolling in the virtual option. This option was offered due to the decreased in-person class sizes and Covid concerns. Families were fearful, offices were closed or not seeing children and immunizations usually easy to obtain in our county, were not accessible due to the county public health not providing in person services.

Childhood obesity and underweight children are concerns for our children. We stressed positive and healthy food choices, decreasing screen time and increasing physical activity. We utilized I Am Moving, I Am Learning, Healthy Beginnings resources and distributed nutritional handouts with our children and families. Trainers from our local extension office who normally provide in person nutritional trainings, did not as they were working from home and we had no in person trainings or gatherings due to the pandemic.

## Health & Nutrition Services

**\*By The Numbers\***

	Head Start		Early Head Start		EHS-CCP	
	@ enroll	@end	@ enroll	@end	@ enroll	@end
% Enrolled Children Who Received Physical Exams*	51%	89%	72%	72%	80%	81%
% Enrolled Children Who Received Dental Exams	83%					



Despite struggles of COVID, we did not let it stop our communication to families on the importance of health and nutrition. As a part of a virtual dental activity this child learns the importance of toothbrushing.



# BUILDING LEADERS

**We build leadership in our program by providing opportunities for parents and community representatives to participate in our Parent Meetings, Policy Council and Governing Board.**

## GOVERNING BOARD MEMBERS

Godwin Apaliyah	Michael Gibbons-Camp
William Dent	Tiffany Graves
James Garland	Dale Lynch
Helona McCracken	Sharon Gibbs
Faye Williamson	Cheryl Royster
Mike Henry/Rob Enochs	Stephanie Roe
Angela Preston	Bob Kinzer
Trevor Patton	Vicki Coffman
Emily Jones	Kuddy Thomas
Laura Jones	

## POLICY COUNCIL MEMBERS

President/HS Parent: Stephanie Roe

Vice President/EHS Parent: Emily Jones

Secretary/ WCH Parent: Becky Baker (Becky never showed and all meetings were virtual so Amy typed all notes)

Fayette County Health Department: Holly Johnson

Fayette County DJFS/Children's Services:

Marcie Hamilton

Starting Gate: Patricia Thibert

Early Head Start/CCP Parent: Sara Leimbach

Jeffersonville HS Parent-Angela Bower

EHS Parent– Tiffany Graves

WCH HS Parent– Emily Jones

WCH HS Parent– Cheyenne Stevenson

WCH HS Parent– Sara Johnson

**Gifted leadership occurs when heart and head – feeling and thought – meet. These are the two winds that allow a leader to soar.**

Daniel Goleman



# PARENT INVOLVEMENT

From the time of enrollment, parents are encouraged and offered many opportunities to be involved in our program. As their child's first teacher, parents have an important role in their child's educational experience. Parent involvement opportunities include, but are not limited to participation in: Policy Council, Governing Board, Early Head Start home visits, Head Start/Early Head Start parent meetings, Early Head Start playgroup socializations, Head Start classroom parent volunteers, as well as other various committees throughout the program year. Our teachers and home visitors encourage parents to continue teaching their child at home by providing homework activities and parent/child reading logs.

Due to the Pandemic, parents were unable to participate in person, however many parents were able to continue participation with parent meetings, Early Head Start socializations and committees virtually via zoom. Additionally, the program provided all families with Thanksgiving meal boxes and Christmas cookie decorating kits as a replacement for some in person activities.



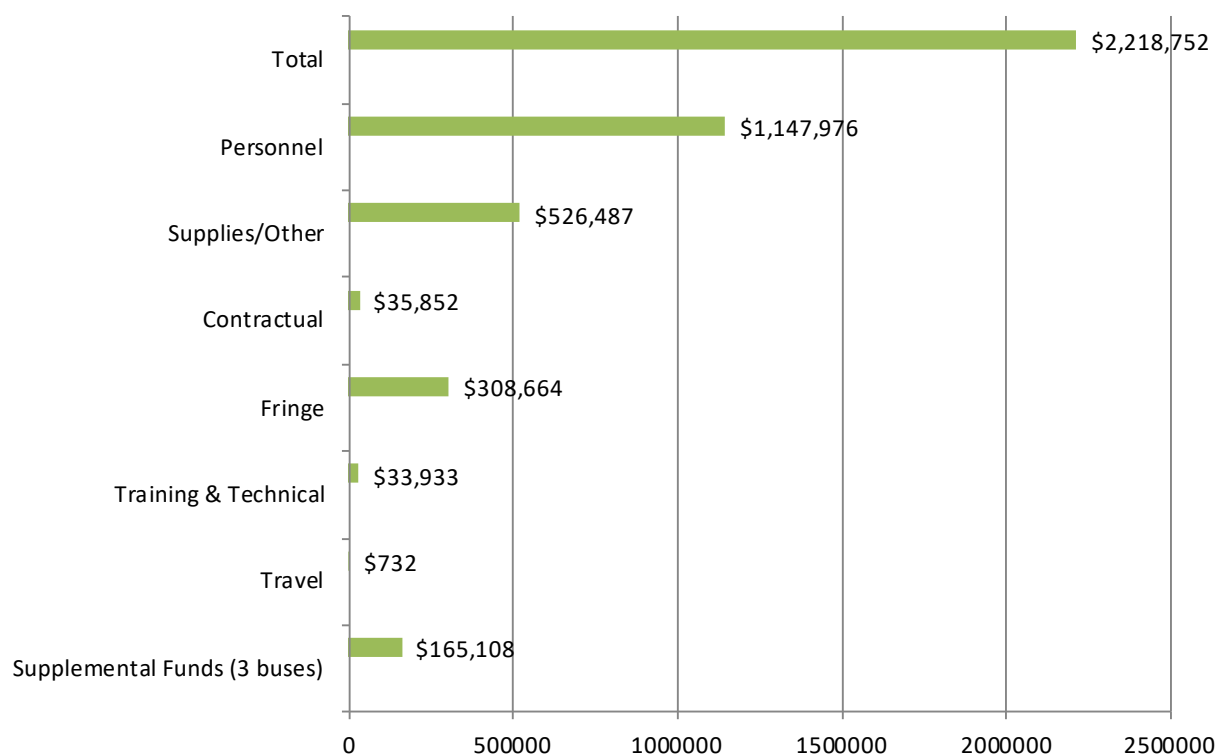


# FUNDING/BUDGETARY INFORMATION

Community Action Commission of Fayette County received a total of \$2,218,752 from the Administration of Children and Families (ACF) to operate the Head Start and Early Head Start home-based program. Those funds included a supplemental grant for the purchase of 3 new buses and seatbelt harnesses and a 2% COLA increase which provided a permanent increase in the program wage and salary scale. In addition to those funds, HS/EHS program also received \$195,975 in COVID funds to purchase needed supplies and materials due to the pandemic. The program also received \$ 1,067,244 in EHS Child Care Partnership funds from the Administration for Children and Families (ACF) to administer the Early Head Start-CCP program for the 2020-2021 program year. Additionally, we received COLA funds in the amount of \$12,739 and COVID funds in the amount of, \$52,728.

The HS/EHS program is required to obtain \$978,823 in non-federal share dollars for the HS/EHS program. The program only obtained \$231,486 and was approved a waiver for the remaining \$147,337. The EHS-CCP program was required to collect \$36,680 (Child Care Partnership programs are only required to collect a portion of the actual Non-Federal share amount). Due to COVID, the program was unable to obtain that amount and received a waiver in the amount of \$23,872.

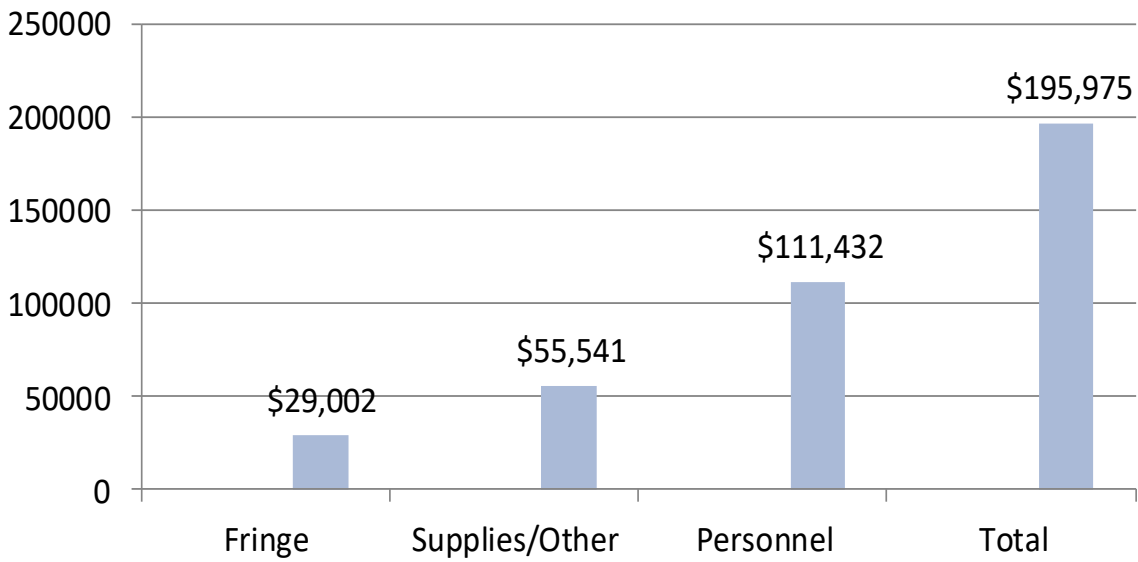
**HS/EHS 2020-2021 Budget**



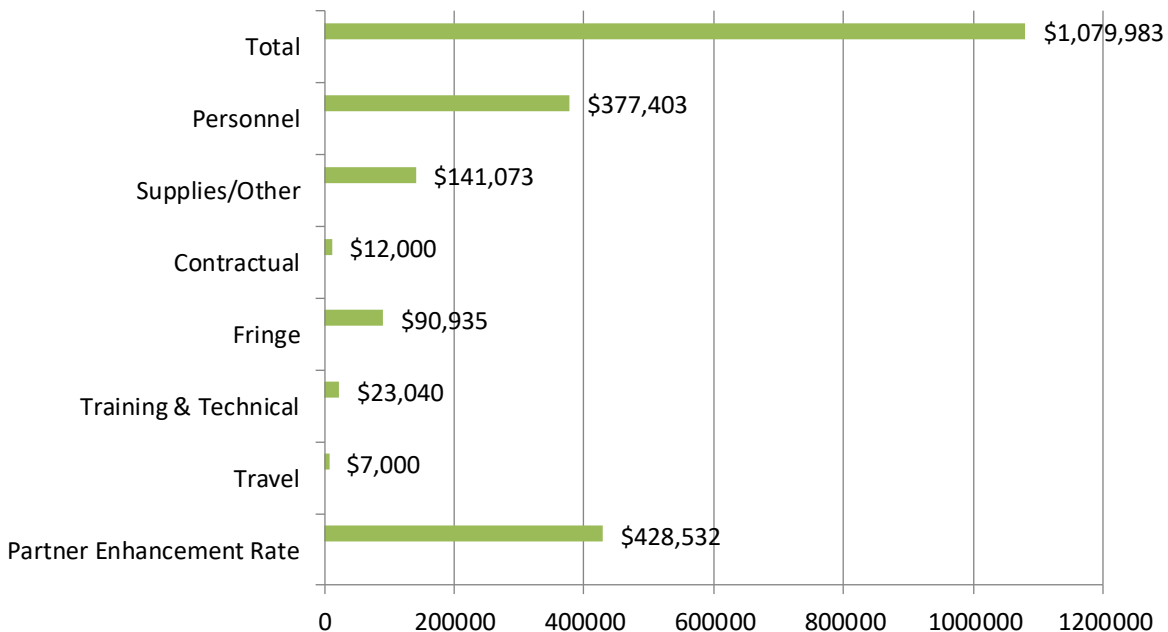


# BUDGET INFORMATION CONT.

## HS/EHS COVID Funds 2020-2021



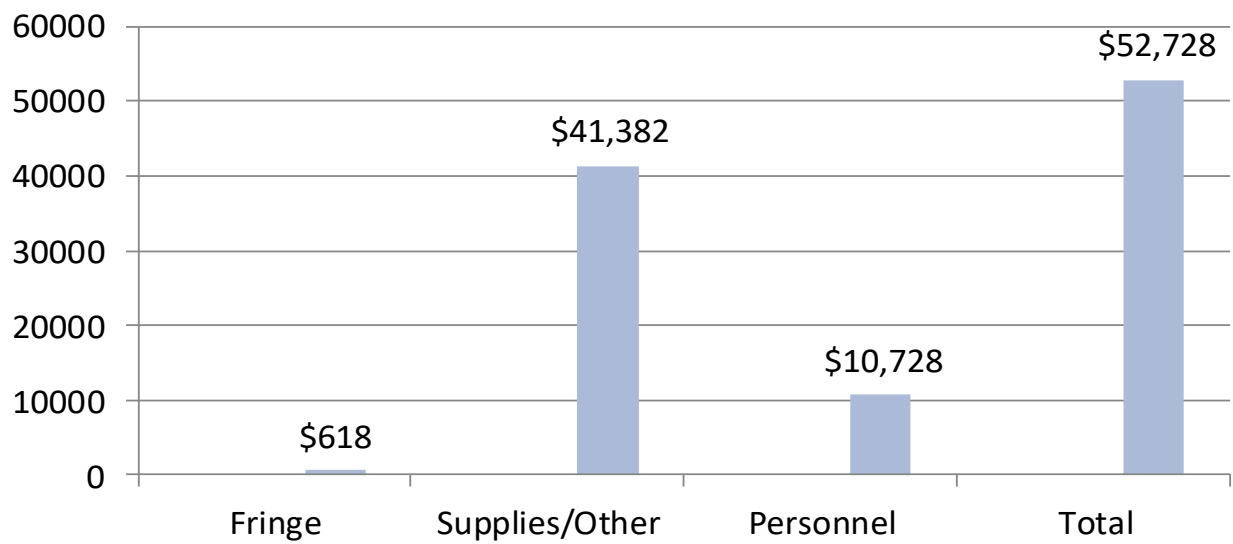
## EHS-CCP 2020-2021 Budget





# BUDGET CONTINUED

## EHS-CCP COVID Funds 2020-2021



### USDA Funding

USDA 3/1/2020 – 2/28/2021 Total Reimbursement: \$ 41,168

\*\* This amount is much lower due to COVID pandemic and only serving 43% of our funded enrollment.



# PROGRAM OPERATIONS

## **Accountability--Quality Assurance--External Review**

Monitoring the goals and activities of Head Start and Early Head Start programs is an ongoing process. Through the use of regular self-assessments, the Tri-Annual Federal Review, and an annual fiscal audit, Fayette County Early Learning Center Head Start and Early Head Start are able to maintain a high quality program and participate in continuous program improvement.

### ***Audit Findings***

The annual New Uniform Guidance fiscal audit had no findings.

### ***Most Recent Findings***

No new reviews due to COVID.